

Product datasheet for **TP300330L**

GRB7 (NM_001030002) Human Recombinant Protein

Product data:

Product Type:	Recombinant Proteins
Description:	Recombinant protein of human growth factor receptor-bound protein 7 (GRB7), transcript variant 2, 1 mg
Species:	Human
Expression Host:	HEK293T
Expression cDNA Clone or AA Sequence:	>RC200330 protein sequence Red =Cloning site Green =Tags(s)

MELDLSPPHLSSSPEDLCPAPGTPPGTTPRPPDTPLPEEVKRSQPLLIPTTGRKLREEERRATSLPSIPNP
FPELCSPPSQPILGGPSSARGLLPRDASRPHVVKVYSEDGACRSVEVAAGATARHVCCEMLVQRAHALSD
ETWGLVECHPHLALERGLEDHESVVEVQAAWPVGGDSRFVFRKNFAKYELFKSSPHSLFPEKMMVSSCLDA
HTGISHEDLIQNFLNAGSFPEIQGFLQLRGSGRKLWKRFFCFLRRSGLYYSTKGTSKDPRHLQYVADVNE
SNVYVVTQGRKLYGMPTDFGFCVKPNKLRNGHKGLRIFCSEDEQSRTCWLAAFRLFYGVLYKQYKQQAQ
SRHLHPSCLGSPPLRSASDNTLVAMDFSGHAGRVIENPREALSVALEEAQAWRKKTNHRLSLPMPASGTS
LSAAIHRTQLWFHGRISREESQRLIGQQGLVDGLFLVRESQRNPQGFVLSLCHLQKVKHYLILPSEEEGR
LYFSMDDGQTRFTDLLQLVEFHQLNRGILPCLLRHCCTRVAL

TRTRPLEQKLISEEDLAANDILDYKDDDDKV

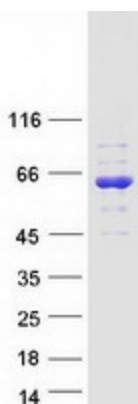
Tag:	C-Myc/DDK
Predicted MW:	59.5 kDa
Concentration:	>0.05 µg/µL as determined by microplate BCA method
Purity:	> 80% as determined by SDS-PAGE and Coomassie blue staining
Buffer:	25 mM Tris-HCl, 100 mM glycine, pH 7.3, 10% glycerol
Preparation:	Recombinant protein was captured through anti-DDK affinity column followed by conventional chromatography steps.
Note:	For testing in cell culture applications, please filter before use. Note that you may experience some loss of protein during the filtration process.
Storage:	Store at -80°C.



[View online »](#)

Stability:	Stable for 12 months from the date of receipt of the product under proper storage and handling conditions. Avoid repeated freeze-thaw cycles.
RefSeq:	NP_001025173
Locus ID:	2886
UniProt ID:	Q14451 , A0A0S2Z4F6
RefSeq Size:	2130
Cytogenetics:	17q12
RefSeq ORF:	1596
Summary:	The product of this gene belongs to a small family of adapter proteins that are known to interact with a number of receptor tyrosine kinases and signaling molecules. This gene encodes a growth factor receptor-binding protein that interacts with epidermal growth factor receptor (EGFR) and ephrin receptors. The protein plays a role in the integrin signaling pathway and cell migration by binding with focal adhesion kinase (FAK). Several transcript variants encoding two different isoforms have been found for this gene. [provided by RefSeq, Jun 2011]
Protein Families:	Druggable Genome, Embryonic stem cells, Stem cell - Pluripotency

Product images:



Coomassie blue staining of purified GRB7 protein (Cat# [TP300330]). The protein was produced from HEK293T cells transfected with GRB7 cDNA clone (Cat# [RC200330]) using MegaTran 2.0 (Cat# [TT210002]).