

Product datasheet for **TP300329M**

HCLS1 (NM_005335) Human Recombinant Protein

Product data:

Product Type: Recombinant Proteins
Description: Recombinant protein of human hematopoietic cell-specific Lyn substrate 1 (HCLS1), 100 µg
Species: Human
Expression Host: HEK293T
Expression cDNA Clone or AA Sequence: >RC200329 protein sequence
Red=Cloning site Green=Tags(s)

MWKSVMGHDVSVSVETQGDDWDTPDFVNDISEKEQRWGAKTIEGSGRTEHINIHLRNKVSEEHDVLRK
 KEMESGPKASHGYGGRFGVERDRMDKSAVGHEYVAEVEKHSSQTDAAKGFGGKYGVERDRADKSAVGFDY
 KGEVEKHTSQKDYSRFGGGRYGVEKDKWDKAALGYDYKGETEKHESQRDYAKGFGGQYGIQKDRVDKSAV
 GFNEMEAPTTAYKKTPIEAASSGARGLKAKFESMAEEKRKREEEKAQQVARRQERKAVTKRSPEAPQ
 PVIAMEEPAVPAPLPKKISSEAWPPVGTTPPSSSESEPVRTSREHPVPLLPIRQTLPEDNEEPPALPPRTLE
 GLQVEEPPVYEAPEPEPEPEPEPENDYEDVEEMDRHEQEDEPEGDYEEVLEPEDSSFSALAGSSGCPA
 GAGAGAVALGISAVALYDYQGEESDELSFDPDDVITDIEMVDEGWWRGRCHGHFGLFPANYVKLLE

TRTRPLEQKLISEEDLAANDILDYKDDDDKV

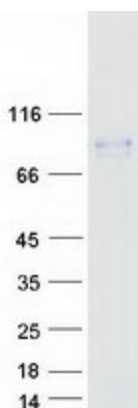
Tag: C-Myc/DDK
Predicted MW: 53.8 kDa
Concentration: >0.05 µg/µL as determined by microplate BCA method
Purity: > 80% as determined by SDS-PAGE and Coomassie blue staining
Buffer: 25 mM Tris-HCl, 100 mM glycine, pH 7.3, 10% glycerol
Preparation: Recombinant protein was captured through anti-DDK affinity column followed by conventional chromatography steps.
Note: For testing in cell culture applications, please filter before use. Note that you may experience some loss of protein during the filtration process.
Storage: Store at -80°C.
Stability: Stable for 12 months from the date of receipt of the product under proper storage and handling conditions. Avoid repeated freeze-thaw cycles.
RefSeq: [NP_005326](#)



[View online »](#)

Locus ID:	3059
UniProt ID:	P14317
RefSeq Size:	2054
Cytogenetics:	3q13.33
RefSeq ORF:	1458
Synonyms:	CTTNL; HS1; lckBP1; p75
Summary:	Substrate of the antigen receptor-coupled tyrosine kinase. Plays a role in antigen receptor signaling for both clonal expansion and deletion in lymphoid cells. May also be involved in the regulation of gene expression.[UniProtKB/Swiss-Prot Function]
Protein Families:	Transcription Factors
Protein Pathways:	Pathogenic Escherichia coli infection, Tight junction

Product images:



Coomassie blue staining of purified HCLS1 protein (Cat# [TP300329]). The protein was produced from HEK293T cells transfected with HCLS1 cDNA clone (Cat# [RC200329]) using MegaTran 2.0 (Cat# [TT210002]).