

## Product datasheet for **TP300329L**

### **HCLS1 (NM\_005335) Human Recombinant Protein**

#### Product data:

Product Type:	Recombinant Proteins
Description:	Recombinant protein of human hematopoietic cell-specific Lyn substrate 1 (HCLS1), 1 mg
Species:	Human
Expression Host:	HEK293T
Expression cDNA Clone or AA Sequence:	>RC200329 protein sequence <b>Red</b> =Cloning site <b>Green</b> =Tags(s)

MWKSVMGHDVSVSVETQGDDWDTDPDFVNDISEKEQRWGAKTIEGSGRTEHINIHLRNKVSEEHDVLRK  
KEMESGPKASHGYGGRFGVERDRMDKSAVGHEHYVAEVEKHSSQTDAAKGFGGKYGVERDRADKSAVGFDY  
KGEVEKHTSQKDYSRFGGGRYGVEKDKWDKAALGYDYKGETEKHESQRDYAKGFGGQYGIQKDRVDKSAV  
GFNEMEAPTTAYKKTTPIEAASSGARGLKAKFESMAEEKRKREEEKAQQVARRQERKAVTKRSPEAPQ  
PVIAMEEPAVPAPLPKKISSEAWPPVGTTPPSSSESEPVRTSREHPVPLLPIRQTLPEDNEEPPALPPRTLE  
GLQVEEPPVYEAPEPEPEPEPEPENDYEDVEEMDRHEQEDEPEGDYEEVLEPEDSSFSALAGSSGCPA  
GAGAGAVALGISAVALYDYQGEESDELSFDPDDVITDIEMVDEGWWRGRCHGHFGLFPANYVKLLE

**TRTRPLEQKLISEEDLAANDILDYKDDDDKV**

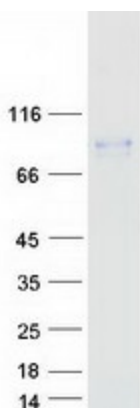
Tag:	C-Myc/DDK
Predicted MW:	53.8 kDa
Concentration:	>0.05 µg/µL as determined by microplate BCA method
Purity:	> 80% as determined by SDS-PAGE and Coomassie blue staining
Buffer:	25 mM Tris-HCl, 100 mM glycine, pH 7.3, 10% glycerol
Preparation:	Recombinant protein was captured through anti-DDK affinity column followed by conventional chromatography steps.
Note:	For testing in cell culture applications, please filter before use. Note that you may experience some loss of protein during the filtration process.
Storage:	Store at -80°C.
Stability:	Stable for 12 months from the date of receipt of the product under proper storage and handling conditions. Avoid repeated freeze-thaw cycles.
RefSeq:	<u><a href="#">NP_005326</a></u>



[View online »](#)

Locus ID:	3059
UniProt ID:	<a href="#">P14317</a>
RefSeq Size:	2054
Cytogenetics:	3q13.33
RefSeq ORF:	1458
Synonyms:	CTTNL; HS1; lckBP1; p75
Summary:	Substrate of the antigen receptor-coupled tyrosine kinase. Plays a role in antigen receptor signaling for both clonal expansion and deletion in lymphoid cells. May also be involved in the regulation of gene expression.[UniProtKB/Swiss-Prot Function]
Protein Families:	Transcription Factors
Protein Pathways:	Pathogenic Escherichia coli infection, Tight junction

### Product images:



Coomassie blue staining of purified HCLS1 protein (Cat# [TP300329]). The protein was produced from HEK293T cells transfected with HCLS1 cDNA clone (Cat# [RC200329]) using MegaTran 2.0 (Cat# [TT210002]).