

## Product datasheet for TP300329

### HCLS1 (NM\_005335) Human Recombinant Protein

#### Product data:

**Product Type:** Recombinant Proteins

**Description:** Recombinant protein of human hematopoietic cell-specific Lyn substrate 1 (HCLS1), 20 µg

**Species:** Human

**Expression Host:** HEK293T

**Expression cDNA Clone or AA Sequence:** >RC200329 protein sequence  
**Red**=Cloning site **Green**=Tags(s)

MWKSVMGHDVSVSVETQGDDWDTDPDFVNDISEKEQRWGAKTIEGSGRTEHINIHLRNKVSEEHDVLRK  
KEMESGPKASHGYGGRFGVERDRMDKSAVGHEYVAEVEKHSSQTDAAKGFGGKYGVERDRADKSAVGFDY  
KGEVEKHTSQKDYSRFGGGRYGVEKDKWDKAALGYDYKGETEKHESQRDYAKGFGGQYGIQKDRVDKSAV  
GFNEMEAPTTAYKKTPIEAASSGARGLKAKFESMAEEKRKREEEKAQQVARRQERKAVTKRSPEAPQ  
PVIAMEEPAVPAPLPKKISSEAWPPVGTTPPSSSESEPVRTSREHPVPLLPIRQTLPEDEEPPALPPRTLE  
GLQVEEPPVYEAPEPEPEPEPEPENDYEDVEEMDRHEQEDEPEGDYEEVLEPEDSSFSALAGSSGCPA  
GAGAGAVALGISAVALDYQGEESDELSFDPDDVITDIEMVDEGWWRGRCHGHFGLFPANYVKLLE

**TRTRPLEQKLISEEDLAANDILDYKDDDDKV**

**Tag:** C-Myc/DDK

**Predicted MW:** 53.8 kDa

**Concentration:** >0.05 µg/µL as determined by microplate BCA method

**Purity:** > 80% as determined by SDS-PAGE and Coomassie blue staining

**Buffer:** 25 mM Tris-HCl, 100 mM glycine, pH 7.3, 10% glycerol

**Preparation:** Recombinant protein was captured through anti-DDK affinity column followed by conventional chromatography steps.

**Note:** For testing in cell culture applications, please filter before use. Note that you may experience some loss of protein during the filtration process.

**Storage:** Store at -80°C.

**Stability:** Stable for 12 months from the date of receipt of the product under proper storage and handling conditions. Avoid repeated freeze-thaw cycles.

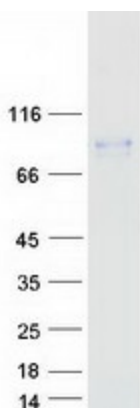
**RefSeq:** [NP\\_005326](#)



[View online »](#)

Locus ID:	3059
UniProt ID:	<a href="#">P14317</a>
RefSeq Size:	2054
Cytogenetics:	3q13.33
RefSeq ORF:	1458
Synonyms:	CTTNL; HS1; lckBP1; p75
Summary:	Substrate of the antigen receptor-coupled tyrosine kinase. Plays a role in antigen receptor signaling for both clonal expansion and deletion in lymphoid cells. May also be involved in the regulation of gene expression.[UniProtKB/Swiss-Prot Function]
Protein Families:	Transcription Factors
Protein Pathways:	Pathogenic Escherichia coli infection, Tight junction

### Product images:



Coomassie blue staining of purified HCLS1 protein (Cat# TP300329). The protein was produced from HEK293T cells transfected with HCLS1 cDNA clone (Cat# [RC200329]) using MegaTran 2.0 (Cat# [TT210002]).