

Product datasheet for **TP300323M**

ABCF2 (NM_007189) Human Recombinant Protein

Product data:

Product Type: Recombinant Proteins

Description: Recombinant protein of human ATP-binding cassette, sub-family F (GCN20), member 2 (ABCF2), nuclear gene encoding mitochondrial protein, transcript variant 1, 100 µg

Species: Human

Expression Host: HEK293T

Expression cDNA Clone or AA Sequence: >RC200323 protein sequence
Red=Cloning site **Green**=Tags(s)

MPSDLAKKKAACKKEAAKARQRPRKGHEENGDVVTEPQVAEKNEANGRETTEVDLLTKELEDFEMKAAA
RAVTGVLASHPNSTDVHIINLSLTFHGQELLSDTKLELNSGRRYGLIGLNGIGKSMLLSAIGKREVIPIE
HIDIYHLTREMPSPDKTPLHCVMEVDTERAMLEKEAERLAHEDAECLELMELYERLEELDADKAEMRASR
ILHGLGFTPAMQRKLLKDFSGGWRMRVALARALFIRPFMLLLDEPTNHLDLDACVWLEEELKTFKRILVL
VSHSQDFLNGVCTNIIHMHNKLLKYYTGNYDQYVKTRLELEENQMCRFHWEQDQIAHMKNYIARFGHGS
KLARQAQSKEKTLQKMMASGLTERVVSDKLSFYFPPCGKIPPPVIMVQNVSFKYTKDGPICYNNLEFGI
DLDRVALVGPNGAGKSTLLKLLTGELLPTDGMIRKHSVHVKIGRYHQHLQEQLDLDSPLEYMMKCYPEI
KEKEEMRKIIGRYGLTGKQQVSPINLSDGQKCRVCLAWLAWQNPMLFLDEPTNHLDIETIDALADAIN
EFEGMMLVSHDFRLIQVAQEIWVCEKQTITKWPGDILAYKEHLKSKLVDEEPQLTKRTHNV

TRTRPLEQKLISEEDLAANDILDYKDDDDKV

Tag: C-Myc/DDK

Predicted MW: 71.1 kDa

Concentration: >0.05 µg/µL as determined by microplate BCA method

Purity: > 80% as determined by SDS-PAGE and Coomassie blue staining

Buffer: 25 mM Tris-HCl, 100 mM glycine, pH 7.3, 10% glycerol

Preparation: Recombinant protein was captured through anti-DDK affinity column followed by conventional chromatography steps.

Note: For testing in cell culture applications, please filter before use. Note that you may experience some loss of protein during the filtration process.

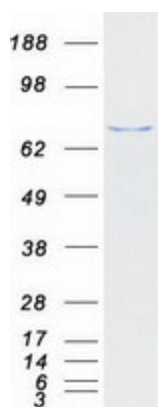
Storage: Store at -80°C.



[View online >](#)

Stability:	Stable for 12 months from the date of receipt of the product under proper storage and handling conditions. Avoid repeated freeze-thaw cycles.
RefSeq:	NP_009120
Locus ID:	10061
UniProt ID:	Q9UG63 , A0A090N7X1
RefSeq Size:	4696
Cytogenetics:	7q36.1
RefSeq ORF:	1869
Synonyms:	ABC28; EST133090; HUSSY-18; HUSSY18
Summary:	This gene encodes a member of the ATP-binding cassette (ABC) transporter superfamily. ATP-binding cassette proteins transport various molecules across extra- and intracellular membranes. Alterations in this gene may be involved in cancer progression. Related pseudogenes have been identified on chromosomes 3 and 7. [provided by RefSeq, Mar 2019]
Protein Families:	Druggable Genome

Product images:



Coomassie blue staining of purified ABCF2 protein (Cat# [TP300323]). The protein was produced from HEK293T cells transfected with ABCF2 cDNA clone (Cat# [RC200323]) using MegaTran 2.0 (Cat# [TT210002]).