

Product datasheet for **TP300323L**

ABCF2 (NM_007189) Human Recombinant Protein

Product data:

Product Type:	Recombinant Proteins
Description:	Recombinant protein of human ATP-binding cassette, sub-family F (GCN20), member 2 (ABCF2), nuclear gene encoding mitochondrial protein, transcript variant 1, 1 mg
Species:	Human
Expression Host:	HEK293T
Expression cDNA Clone or AA Sequence:	>RC200323 protein sequence Red =Cloning site Green =Tags(s)

MPSDLAKKKAACKKEAAKARQRPRKGHEENGDVVTEPQVAEKNEANGRETTEVDLLTKELEDFEMKAAA
RAVTGVLASHPNSTDVHIINLSLTFHGQELLSDTKLELNSGRRYGLIGLNGIGKSMLLSAIGKREVIPIE
HIDIYHLTREMPSPDKTPLHCVMEVDTERAMLEKEAERLAHEDAECLELMELYERLEELDADKAEMRASR
ILHGLGFTPAMQRKKLKDFSGGWRMRVALARALFIRPFMLLLDEPTNHLDLDACVWLEEELKTFKRILVL
VSHSQDFLNGVCTNIIHMHNKLLKYYTGNYDQYVKTRLELEENQMCRFHWEQDQIAHMKNYIARFGHGSA
KLARQAQSKEKTLQKMMASGLTERVVSDKTLSTFYFPPCGKIPPPVIMVQNVSFKYTKDGPICYNNLEFGI
DLDRVALVGPNGAGKSTLLKLLTGELLPTDGMIRKHSVHVKIGRYHQHLQEQLDLDSPLEYMMKCYPEI
KEKEEMRKIIGRYGLTGKQQVSPINLSDGQKCRVCLAWLAWQNPMLFLDEPTNHLDIETIDALADAIN
EFEGMMLVSHDFRLIQVAQEIWVCEKQTITKWPGDILAYKEHLKSKLVDEEPQLTKRTHNV

TRTRPLEQKLISEEDLAANDILDYKDDDDKV

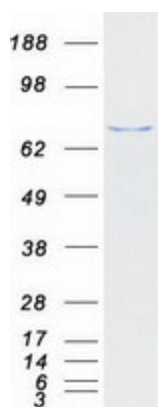
Tag:	C-Myc/DDK
Predicted MW:	71.1 kDa
Concentration:	>0.05 µg/µL as determined by microplate BCA method
Purity:	> 80% as determined by SDS-PAGE and Coomassie blue staining
Buffer:	25 mM Tris-HCl, 100 mM glycine, pH 7.3, 10% glycerol
Preparation:	Recombinant protein was captured through anti-DDK affinity column followed by conventional chromatography steps.
Note:	For testing in cell culture applications, please filter before use. Note that you may experience some loss of protein during the filtration process.
Storage:	Store at -80°C.



[View online »](#)

Stability:	Stable for 12 months from the date of receipt of the product under proper storage and handling conditions. Avoid repeated freeze-thaw cycles.
RefSeq:	NP_009120
Locus ID:	10061
UniProt ID:	Q9UG63 , A0A090N7X1
RefSeq Size:	4696
Cytogenetics:	7q36.1
RefSeq ORF:	1869
Synonyms:	ABC28; EST133090; HUSSY-18; HUSSY18
Summary:	This gene encodes a member of the ATP-binding cassette (ABC) transporter superfamily. ATP-binding cassette proteins transport various molecules across extra- and intracellular membranes. Alterations in this gene may be involved in cancer progression. Related pseudogenes have been identified on chromosomes 3 and 7. [provided by RefSeq, Mar 2019]
Protein Families:	Druggable Genome

Product images:



Coomassie blue staining of purified ABCF2 protein (Cat# [TP300323]). The protein was produced from HEK293T cells transfected with ABCF2 cDNA clone (Cat# [RC200323]) using MegaTran 2.0 (Cat# [TT210002]).