

Product datasheet for TP300316L

CERT1 (NM_031361) Human Recombinant Protein

Product data:

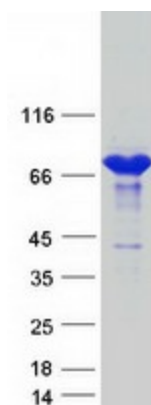
Product Type:	Recombinant Proteins
Description:	Recombinant protein of human collagen, type IV, alpha 3 (Goodpasture antigen) binding protein (COL4A3BP), transcript variant 2, 1 mg
Species:	Human
Expression Host:	HEK293T
Expression cDNA Clone or AA Sequence:	>RC200316 representing NM_031361 Red=Cloning site Green=Tags(s)
	<p>MSDNQSWNSSGSEEDPETESGPPVERCGVLSKWTNYIHGWQDRWWLKNALSYYKSEDETEYGCRGSIC LSKAVITPHDFDECRFDISVNDVWYLRAQDPDHRQQWIDAIEQHKTESGYGSESSLRRHGSMVSLVSGA SGYSATSTSSFKKGHSLREKLAEMETFRDILCRQVDTLQKYFDACADAVSKDELQRDKVVEDDEDDFPTT RSDGDFLHSTNGNKEKLFPHVTPKINGIDFKGEAITFKATTAGILATLSHCIELMVKREDSWQKRLDKE TEKKRRTEEAYKNAMTELKKKSHFGGPDYEEGPNLINEEEFFDAVEAALDRQDKIEEQSQSEKVRHLHWP TSLPSGDAFSSVGTFRVQKVEEMVQNHMTYSLQDVGGDANWQLVVEEGEMKVYRREVEENGIVLDPLKA THAVKGVGTGHEVCNYFWNVDRNDWETTIEFHVETLADNAIIYQTHKRVWPASQRDVLVYLVIRKIP ALTENDPETWIVCNFSDHDSAPLNNRCVRAKINVAMICQLVSPPEGNQIEISRDNILCKITYVANVNP GWAPASVLRRAVAKREYPKFLKRFTSYVQEKTAGKPILF</p> <p>SGPTRRRLEQKLISEEDLAANDILDYKDDDDKV</p>
Tag:	C-Myc/DDK
Predicted MW:	67.8 kDa
Concentration:	>0.05 µg/µL as determined by microplate BCA method
Purity:	> 80% as determined by SDS-PAGE and Coomassie blue staining
Buffer:	25 mM Tris-HCl, 100 mM glycine, pH 7.3, 10% glycerol
Preparation:	Recombinant protein was captured through anti-DDK affinity column followed by conventional chromatography steps.
Note:	For testing in cell culture applications, please filter before use. Note that you may experience some loss of protein during the filtration process.
Storage:	Store at -80°C.



[View online »](#)

Stability:	Stable for 12 months from the date of receipt of the product under proper storage and handling conditions. Avoid repeated freeze-thaw cycles.
RefSeq:	NP_112729
Locus ID:	10087
UniProt ID:	Q9Y5P4 , A0A024RAJ5
RefSeq Size:	2311
Cytogenetics:	5q13.3
RefSeq ORF:	1794
Synonyms:	CERT; CERTL; COL4A3BP; GPBP; MRD34; STARD11
Summary:	This gene encodes a kinase that specifically phosphorylates the N-terminal region of the non-collagenous domain of the alpha 3 chain of type IV collagen, known as the Goodpasture antigen. Goodpasture disease is the result of an autoimmune response directed at this antigen. One isoform of this protein is also involved in ceramide intracellular transport. Three transcript variants encoding different isoforms have been found for this gene. [provided by RefSeq, Jul 2008]

Product images:



Coomassie blue staining of purified CERT1 protein (Cat# [TP300316]). The protein was produced from HEK293T cells transfected with CERT1 cDNA clone (Cat# [RC200316]) using MegaTran 2.0 (Cat# [TT210002]).