

## Product datasheet for TP300313M

### IDH3A (NM\_005530) Human Recombinant Protein

#### Product data:

Product Type:	Recombinant Proteins
Description:	Recombinant protein of human isocitrate dehydrogenase 3 (NAD+) alpha (IDH3A), nuclear gene encoding mitochondrial protein, 100 µg
Species:	Human
Expression Host:	HEK293T
Expression cDNA Clone or AA Sequence:	>RC200313 protein sequence <b>Red</b> =Cloning site <b>Green</b> =Tags(s)
	MAGPAWISKVSRLLGAFHNPKQVTRGFTGGVQTVTLIPGDGIGPEISAAVMKIFDAAKAPIQWEERNVTA IQGPGGKWMIPSEAKESMDKNKMGLKGPLKTPIAAGHPSMNLRLKTFDLYANVRPCVSIIEGYKTPYTDV NIVTIRENTEGEYSGIEHVVDGQVSIKLITGASKRIAEFAFEYARNNHRSNVTAVHKANIMRMSDGL FLQKCREVAESCKDIKFNEMYLDTVCLNMVQDPSQFDVLVMPNLYGDILSDLCAGLIGGLGVTPSGNIGA NGVAIFESVHGTAPDIAGKDMANPTALLLSAVMMLRHMGLFDHAARIEAACFATIKDGKSLTKDLGGNAK CSDFTTEICRRVKDLD
	<b>TRTRPLEQKLISEEDLAANDILDYKDDDDKV</b>
Tag:	C-Myc/DDK
Predicted MW:	36.6 kDa
Concentration:	>0.05 µg/µL as determined by microplate BCA method
Purity:	> 80% as determined by SDS-PAGE and Coomassie blue staining
Buffer:	25 mM Tris-HCl, 100 mM glycine, pH 7.3, 10% glycerol
Preparation:	Recombinant protein was captured through anti-DDK affinity column followed by conventional chromatography steps.
Note:	For testing in cell culture applications, please filter before use. Note that you may experience some loss of protein during the filtration process.
Storage:	Store at -80°C.
Stability:	Stable for 12 months from the date of receipt of the product under proper storage and handling conditions. Avoid repeated freeze-thaw cycles.
RefSeq:	<a href="#">NP_005521</a>



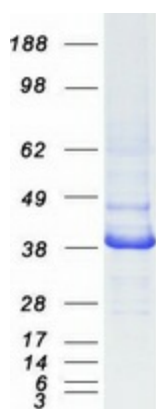
[View online »](#)

Locus ID:	3419
UniProt ID:	<a href="#">P50213</a>
RefSeq Size:	2701
Cytogenetics:	15q25.1
RefSeq ORF:	1098
Synonyms:	RP90

**Summary:** Isocitrate dehydrogenases catalyze the oxidative decarboxylation of isocitrate to 2-oxoglutarate. These enzymes belong to two distinct subclasses, one of which utilizes NAD(+) as the electron acceptor and the other NADP(+). Five isocitrate dehydrogenases have been reported: three NAD(+)-dependent isocitrate dehydrogenases, which localize to the mitochondrial matrix, and two NADP(+)-dependent isocitrate dehydrogenases, one of which is mitochondrial and the other predominantly cytosolic. NAD(+)-dependent isocitrate dehydrogenases catalyze the allosterically regulated rate-limiting step of the tricarboxylic acid cycle. Each isozyme is a heterotetramer that is composed of two alpha subunits, one beta subunit, and one gamma subunit. The protein encoded by this gene is the alpha subunit of one isozyme of NAD(+)-dependent isocitrate dehydrogenase. [provided by RefSeq, Jul 2008]

**Protein Pathways:** Citrate cycle (TCA cycle), Metabolic pathways

### Product images:



Coomassie blue staining of purified IDH3A protein (Cat# [TP300313]). The protein was produced from HEK293T cells transfected with IDH3A cDNA clone (Cat# [RC200313]) using MegaTran 2.0 (Cat# [TT210002]).