

Product datasheet for **TP300307M**

RHEB (NM_005614) Human Recombinant Protein

Product data:

Product Type:	Recombinant Proteins
Description:	Recombinant protein of human Ras homolog enriched in brain (RHEB), 100 µg
Species:	Human
Expression Host:	HEK293T
Expression cDNA Clone or AA Sequence:	>RC200307 representing NM_005614 Red =Cloning site Green =Tags(s)
	MPQSKSRKIAILGYRSVGKSSLTIQFVEGQFVDSYDPTIENTFTKLITVNGQEYHLQLVDTAGQDEYSIF PQTYSIDINGYILVYSVTSIKSFEVIKVIHGKLLDMVGKVQIPIMLVGNKKDLHMERSVISYEEGKALAES WNAAFLESSAKENQTAVDVFRRIILEAEKMDGAASQGKSSCSVM
	TRTRPLEQKLISEEDLAANDILDYKDDDDKV
Tag:	C-Myc/DDK
Predicted MW:	20.3 kDa
Concentration:	>0.05 µg/µL as determined by microplate BCA method
Purity:	> 80% as determined by SDS-PAGE and Coomassie blue staining
Buffer:	25 mM Tris-HCl, 100 mM glycine, pH 7.3, 10% glycerol
Preparation:	Recombinant protein was captured through anti-DDK affinity column followed by conventional chromatography steps.
Note:	For testing in cell culture applications, please filter before use. Note that you may experience some loss of protein during the filtration process.
Storage:	Store at -80°C.
Stability:	Stable for 12 months from the date of receipt of the product under proper storage and handling conditions. Avoid repeated freeze-thaw cycles.
RefSeq:	NP_005605
Locus ID:	6009
UniProt ID:	Q15382 , A0A090N900
RefSeq Size:	1396



[View online »](#)

Cytogenetics: 7q36.1

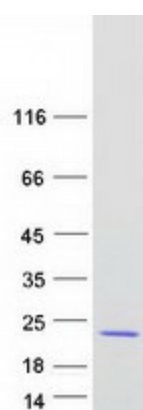
RefSeq ORF: 552

Synonyms: RHEB2

Summary: This gene is a member of the small GTPase superfamily and encodes a lipid-anchored, cell membrane protein with five repeats of the RAS-related GTP-binding region. This protein is vital in regulation of growth and cell cycle progression due to its role in the insulin/TOR/S6K signaling pathway. The protein has GTPase activity and shuttles between a GDP-bound form and a GTP-bound form, and farnesylation of the protein is required for this activity. Three pseudogenes have been mapped, two on chromosome 10 and one on chromosome 22. [provided by RefSeq, Jul 2008]

Protein Pathways: Insulin signaling pathway, mTOR signaling pathway

Product images:



Coomassie blue staining of purified RHEB protein (Cat# [TP300307]). The protein was produced from HEK293T cells transfected with RHEB cDNA clone (Cat# [RC200307]) using MegaTran 2.0 (Cat# [TT210002]).