

Product datasheet for **TP300280**

IPP 2 (PPP1R2) (NM_006241) Human Recombinant Protein

Product data:

Product Type:	Recombinant Proteins
Description:	Recombinant protein of human protein phosphatase 1, regulatory (inhibitor) subunit 2 (PPP1R2), 20 µg
Species:	Human
Expression Host:	HEK293T
Expression cDNA Clone or AA Sequence:	>RC200280 protein sequence Red =Cloning site Green =Tags(s)
	 MAASTASHRPIKGILKNKTSTTSSMVASAEQPRGNVDEELSKKSQKWDEMNILATYHPADKDYGLMKIDE PSTPYHSMMGDDEDACSDTEATEAMAPDILARKLAAAEGLEPKYRIQEQESSGEEDSDLSPEEREKKRQF EMKRKLHYNEGLNIKRLARQLISKDLHDDDEEMLETADGESMNTESNQGSTPSDQQQNKLRSS TRTRPLEQKLISEEDLAANDILDYKDDDDKV
Tag:	C-Myc/DDK
Predicted MW:	22.8 kDa
Concentration:	>0.05 µg/µL as determined by microplate BCA method
Purity:	> 80% as determined by SDS-PAGE and Coomassie blue staining
Buffer:	25 mM Tris-HCl, 100 mM glycine, pH 7.3, 10% glycerol
Preparation:	Recombinant protein was captured through anti-DDK affinity column followed by conventional chromatography steps.
Note:	For testing in cell culture applications, please filter before use. Note that you may experience some loss of protein during the filtration process.
Storage:	Store at -80°C.
Stability:	Stable for 12 months from the date of receipt of the product under proper storage and handling conditions. Avoid repeated freeze-thaw cycles.
RefSeq:	NP_006232
Locus ID:	5504
UniProt ID:	P41236



[View online »](#)

RefSeq Size: 3468

Cytogenetics: 3q29

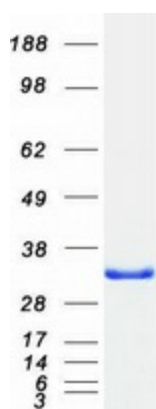
RefSeq ORF: 615

Synonyms: IPP-2; IPP2; PPP1R2A

Summary: Protein phosphatase-1 (PP1) is one of the main eukaryotic serine/threonine phosphatases. The protein encoded by this gene binds to the catalytic subunit of PP1, strongly inhibiting its activity. Ten related pseudogenes have been found throughout the human genome. Several splice variants encoding different isoforms have been found for this gene. [provided by RefSeq, Oct 2015]

Protein Families: Druggable Genome

Product images:



Coomassie blue staining of purified PPP1R2 protein (Cat# TP300280). The protein was produced from HEK293T cells transfected with PPP1R2 cDNA clone (Cat# [RC200280]) using MegaTran 2.0 (Cat# [TT210002]).