

Product datasheet for **TP300268L**

Annexin A10 (ANXA10) (NM_007193) Human Recombinant Protein

Product data:

Product Type:	Recombinant Proteins
Description:	Recombinant protein of human annexin A10 (ANXA10), 1 mg
Species:	Human
Expression Host:	HEK293T
Expression cDNA	>RC200268 protein sequence
Clone or AA Sequence:	Red=Cloning site Green=Tags(s)

MFCGDYVQGTIFPAPNFPNPIMDAQMLGGALQGFDCDKDMLINILTQRCNAQRMMIAEAYQSMYGRDLIGD
MREQLSDHFKDVMAGLMYPPPLYDAHELWHAMKGVGTDENCLIEILASRTNGEIFQMREAYCLQYSNNLQ
EDIYSETSGHFRDTLMNLVQGTREEGYTDPAMAAQDAMVLWEACQKKTGEHKTMLQMILCNKSYQQLRLV
FQEFQNISGQDMVDINECYDGYFQELLVAIVLCVRDKPAYFAYRLYSAIHDFGFHNKTVIRILIASSEI
DLLTIRKRYKERYGKSLFHDIRNFASGHYKALLAICAGDAEDY

TRTRPLEQKLISEEDLAANDILDYKDDDDKV

Tag:	C-Myc/DDK
Predicted MW:	37.1 kDa
Concentration:	>0.05 µg/µL as determined by microplate BCA method
Purity:	> 80% as determined by SDS-PAGE and Coomassie blue staining
Buffer:	25 mM Tris-HCl, 100 mM glycine, pH 7.3, 10% glycerol
Preparation:	Recombinant protein was captured through anti-DDK affinity column followed by conventional chromatography steps.
Note:	For testing in cell culture applications, please filter before use. Note that you may experience some loss of protein during the filtration process.
Storage:	Store at -80°C.
Stability:	Stable for 12 months from the date of receipt of the product under proper storage and handling conditions. Avoid repeated freeze-thaw cycles.
RefSeq:	NP_009124
Locus ID:	11199



[View online »](#)

UniProt ID: [Q9UJ72](#)

RefSeq Size: 1447

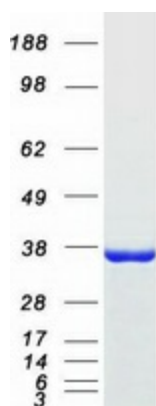
Cytogenetics: 4q32.3

RefSeq ORF: 972

Synonyms: ANX14

Summary: This gene encodes a member of the annexin family. Members of this calcium-dependent phospholipid-binding protein family play a role in the regulation of cellular growth and in signal transduction pathways. The function of this gene has not yet been determined. [provided by RefSeq, Jul 2008]

Product images:



Coomassie blue staining of purified ANXA10 protein (Cat# [TP300268]). The protein was produced from HEK293T cells transfected with ANXA10 cDNA clone (Cat# [RC200268]) using MegaTran 2.0 (Cat# [TT210002]).