

Product datasheet for TP300260L

YKT6 (NM_006555) Human Recombinant Protein

Product data:

Product Type:	Recombinant Proteins
Description:	Recombinant protein of human YKT6 v-SNARE homolog (<i>S. cerevisiae</i>) (YKT6), 1 mg
Species:	Human
Expression Host:	HEK293T
Expression cDNA Clone or AA Sequence:	>RC200260 protein sequence Red =Cloning site Green =Tags(s)
	MKLYLSLVLYKGEAKVLLKAAYDVSSFSFFQRSSVQEFMTFTSQLIVERSKGTTRASVKEQDYLCVYV RNSLAGVIADNEYPSRVAFTLLEKVLDEFKQVDRIDWPVGSPTIHYALDGHLSRYQNPREADPMT KVQAEDET K I I L H N T M E S L L E R G E K L D D L V S K S E V L G T Q S K A F Y K T A R K Q N S C C A I M
	TRTRPLEQKLISEEDLAANDILDYKDDDDKV
Tag:	C-Myc/DDK
Predicted MW:	22.2 kDa
Concentration:	>0.05 µg/µL as determined by microplate BCA method
Purity:	> 80% as determined by SDS-PAGE and Coomassie blue staining
Buffer:	25 mM Tris-HCl, 100 mM glycine, pH 7.3, 10% glycerol
Preparation:	Recombinant protein was captured through anti-DDK affinity column followed by conventional chromatography steps.
Note:	For testing in cell culture applications, please filter before use. Note that you may experience some loss of protein during the filtration process.
Storage:	Store at -80°C.
Stability:	Stable for 12 months from the date of receipt of the product under proper storage and handling conditions. Avoid repeated freeze-thaw cycles.
RefSeq:	NP_006546
Locus ID:	10652
UniProt ID:	O15498 , A4D2J0
RefSeq Size:	2783



[View online »](#)

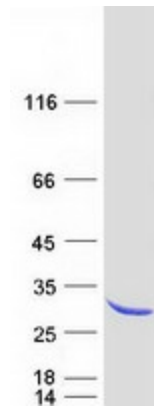
Cytogenetics: 7p13

RefSeq ORF: 594

Summary: This gene product is one of the SNARE recognition molecules implicated in vesicular transport between secretory compartments. It is a membrane associated, isoprenylated protein that functions at the endoplasmic reticulum-Golgi transport step. This protein is highly conserved from yeast to human and can functionally complement the loss of the yeast homolog in the yeast secretory pathway. [provided by RefSeq, Jul 2008]

Protein Pathways: SNARE interactions in vesicular transport

Product images:



Coomassie blue staining of purified YKT6 protein (Cat# [TP300260]). The protein was produced from HEK293T cells transfected with YKT6 cDNA clone (Cat# [RC200260]) using MegaTran 2.0 (Cat# [TT210002]).