

## Product datasheet for **TP300254L**

### **MCAK (KIF2C) (NM\_006845) Human Recombinant Protein**

#### **Product data:**

**Product Type:** Recombinant Proteins

**Description:** Recombinant protein of human kinesin family member 2C (KIF2C), 1 mg

**Species:** Human

**Expression Host:** HEK293T

**Expression cDNA Clone or AA Sequence:** >RC200254 protein sequence  
**Red**=Cloning site **Green**=Tags(s)

MAMDSSLQARLFPGLAIKIQRSNGLIHSANVRTVNLEKSCVSVVEWAEGGATKGKEIDFDDVAAINPELLQ  
LLPLHPKDNLPLQENVTIQKQKRRSVNSKIPAPKESLRSRSTRMSTVSELRITAQENDMEVELPAAANSR  
KQFSVPPAPTRPSCPVAEIPLRMVSEEMEEQVHSIRGSSSANPVNSVRRKSLVKEVEKMKNKREEKKA  
QNSEMRMKRAQEYDSSFNWEFARMIKEFRATLECHPLTMTDPIEEHRICVCRKRPLNKQELAKKEIDV  
ISIPSKCLLLVHEPKLKVDLTKYLENQAFCFDFAFDETASNEWYRFTARPLVQTIFEGGKATCFAYGQT  
GSGKTHTMGGDLSGKAQNASKGIYAMASRDVFLKNQPCYRKLGLEVYVTFEYNGKLFDLLNKKAKLR  
VLEDGKQVQVVGLEHLVNSADDVIKIDMGSACRTSGQTFANSNSSRSHACFQIILRAKGRMHGKFSL  
VDLAGNERGADTSSADRQTRMEGAEINKSLLALKECIRALGQNKAAHTPFRESKLTQVLRDSFIGENSRTC  
MIATISPGISSCEYTLNTRLRYADRVKELSPHSGPSGEQLIQMETEEMEACSNALIPGNLSKEEEEELSSQ  
MSSFNEAMTQIRELEEKAMEELKEIIQQGPDWLELSEMTEQPDPDYDLETFVNKAESALAAQAKHFSALPDV  
IKALRLAMQLEEQASRQISSKKRPQ

**Tag:** C-Myc/DDK

**Predicted MW:** 81.1 kDa

**Concentration:** >0.05 µg/µL as determined by microplate BCA method

**Purity:** > 80% as determined by SDS-PAGE and Coomassie blue staining

**Buffer:** 25 mM Tris-HCl, 100 mM glycine, pH 7.3, 10% glycerol

**Preparation:** Recombinant protein was captured through anti-DDK affinity column followed by conventional chromatography steps.

**Note:** For testing in cell culture applications, please filter before use. Note that you may experience some loss of protein during the filtration process.

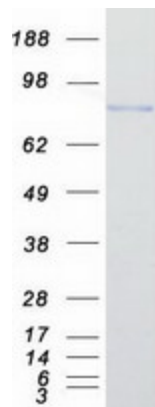
**Storage:** Store at -80°C.



[View online »](#)

<b>Stability:</b>	Stable for 12 months from the date of receipt of the product under proper storage and handling conditions. Avoid repeated freeze-thaw cycles.
<b>RefSeq:</b>	<a href="#">NP_006836</a>
<b>Locus ID:</b>	11004
<b>UniProt ID:</b>	<a href="#">Q99661</a> , <a href="#">A0A140VKF1</a>
<b>RefSeq Size:</b>	2896
<b>Cytogenetics:</b>	1p34.1
<b>RefSeq ORF:</b>	2175
<b>Synonyms:</b>	CT139; KNSL6; MCAK
<b>Summary:</b>	This gene encodes a kinesin-like protein that functions as a microtubule-dependent molecular motor. The encoded protein can depolymerize microtubules at the plus end, thereby promoting mitotic chromosome segregation. Alternative splicing results in multiple transcript variants. [provided by RefSeq, Jul 2014]
<b>Protein Families:</b>	Druggable Genome

### Product images:



Coomassie blue staining of purified KIF2C protein (Cat# [TP300254]). The protein was produced from HEK293T cells transfected with KIF2C cDNA clone (Cat# [RC200254]) using MegaTran 2.0 (Cat# [TT210002]).