

## Product datasheet for **TP300244**

### CLEC4E (NM\_014358) Human Recombinant Protein

#### Product data:

Product Type:	Recombinant Proteins
Description:	Recombinant protein of human C-type lectin domain family 4, member E (CLEC4E), 20 µg
Species:	Human
Expression Host:	HEK293T
Expression cDNA Clone or AA Sequence:	>RC200244 protein sequence <b>Red</b> =Cloning site <b>Green</b> =Tags(s)
	 MNSSKSSETQCTERGCFFSSQMFLWTVAGIPIFLSACFITRCVWTFRIFQTCDEKKFQLPENFTELSCYN YSGSGSVKNCCPLNWEYFQSSCYFFSTDTISWALS LKNCSAMGAHLVWINSQEEQEFLSYKKPKMREFFIG LSDQVVEGQWQWVDGTPLTKSLSFDVGEPNNIATLEDCATMRDSSNPRQNWNDVTCFLNYFRICEMV GI NPLNKGKSL  <b>TRTRPLEQKLISEEDLAANDILDYKDDDDKV</b>
Tag:	C-Myc/DDK
Predicted MW:	24.9 kDa
Concentration:	>0.05 µg/µL as determined by microplate BCA method
Purity:	> 80% as determined by SDS-PAGE and Coomassie blue staining
Buffer:	25 mM Tris-HCl, 100 mM glycine, pH 7.3, 10% glycerol
Preparation:	Recombinant protein was captured through anti-DDK affinity column followed by conventional chromatography steps.
Note:	For testing in cell culture applications, please filter before use. Note that you may experience some loss of protein during the filtration process.
Storage:	Store at -80°C.
Stability:	Stable for 12 months from the date of receipt of the product under proper storage and handling conditions. Avoid repeated freeze-thaw cycles.
RefSeq:	<u><a href="#">NP_055173</a></u>
Locus ID:	26253



[View online »](#)

UniProt ID: [Q9ULY5](#)

RefSeq Size: 2158

Cytogenetics: 12p13.31

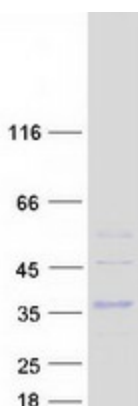
RefSeq ORF: 657

Synonyms: CLECSF9; MINCLE

**Summary:** This gene encodes a member of the C-type lectin/C-type lectin-like domain (CTL/CTLD) superfamily. Members of this family share a common protein fold and have diverse functions, such as cell adhesion, cell-cell signalling, glycoprotein turnover, and roles in inflammation and immune response. The encoded type II transmembrane protein is a downstream target of CCAAT/enhancer binding protein (C/EBP), beta (CEBPB) and may play a role in inflammation. Alternative splice variants have been described but their full-length sequence has not been determined. This gene is closely linked to other CTL/CTLD superfamily members on chromosome 12p13 in the natural killer gene complex region. [provided by RefSeq, Jul 2008]

**Protein Families:** Druggable Genome, Transmembrane

### Product images:



Coomassie blue staining of purified CLEC4E protein (Cat# TP300244). The protein was produced from HEK293T cells transfected with CLEC4E cDNA clone (Cat# [RC200244]) using MegaTran 2.0 (Cat# [TT210002]).