

## Product datasheet for TP300241

### Sumo 3 (SUMO3) (NM\_006936) Human Recombinant Protein

#### Product data:

Product Type:	Recombinant Proteins
Description:	Recombinant protein of human SMT3 suppressor of mif two 3 homolog 3 ( <i>S. cerevisiae</i> ) (SUMO3), 20 µg
Species:	Human
Expression Host:	HEK293T
Expression cDNA Clone or AA Sequence:	>RC200241 protein sequence <b>Red</b> =Cloning site <b>Green</b> =Tags(s)
	MSEEKPKKEGVKTENDHINLKVAGQDGSVVQFKIKRHTPLSKLMKAYCERQGLSMRQIRFRFDGQPINETD TPAQLMEDEDTIDVFQQQTGGVPESSLAGHSF
	<b>TR</b> TRPLEQKLISEEDLAANDILDYKDDDDKV
Tag:	C-Myc/DDK
Predicted MW:	11.5 kDa
Concentration:	>0.05 µg/µL as determined by microplate BCA method
Purity:	> 80% as determined by SDS-PAGE and Coomassie blue staining
Buffer:	25 mM Tris-HCl, 100 mM glycine, pH 7.3, 10% glycerol
Preparation:	Recombinant protein was captured through anti-DDK affinity column followed by conventional chromatography steps.
Note:	For testing in cell culture applications, please filter before use. Note that you may experience some loss of protein during the filtration process.
Storage:	Store at -80°C.
Stability:	Stable for 12 months from the date of receipt of the product under proper storage and handling conditions. Avoid repeated freeze-thaw cycles.
RefSeq:	<a href="#">NP_008867</a>
Locus ID:	6612
UniProt ID:	<a href="#">P55854</a>
RefSeq Size:	1831



[View online »](#)

Cytogenetics: 21q22.3

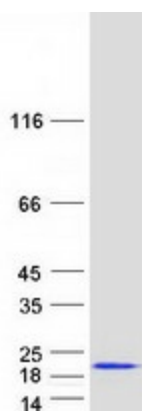
RefSeq ORF: 309

Synonyms: SMT3A; Smt3B; SMT3H1; SUMO-3

**Summary:** This gene encodes a member of the small ubiquitin-related modifier (SUMO) family of eukaryotic proteins. The encoded protein is covalently conjugated to other proteins via a post-translation modification known as sumoylation. Sumoylation may play a role in a wide variety of cellular processes, including nuclear transport, DNA replication and repair, mitosis, transcriptional regulation, and signal transduction. Alternatively spliced transcript variants encoding distinct proteins have been described. [provided by RefSeq, Feb 2014]

**Protein Families:** Druggable Genome

### Product images:



Coomassie blue staining of purified SUMO3 protein (Cat# TP300241). The protein was produced from HEK293T cells transfected with SUMO3 cDNA clone (Cat# [RC200241]) using MegaTran 2.0 (Cat# [TT210002]).