

## Product datasheet for **TP300238**

### ERG28 (C14orf1) (NM\_007176) Human Recombinant Protein

#### Product data:

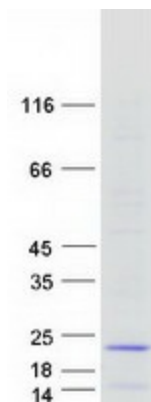
Product Type:	Recombinant Proteins
Description:	Recombinant protein of human chromosome 14 open reading frame 1 (C14orf1), 20 µg
Species:	Human
Expression Host:	HEK293T
Expression cDNA Clone or AA Sequence:	>RC200238 protein sequence <b>Red</b> =Cloning site <b>Green</b> =Tags(s)
	MSRFLNVLRSWLVMVSIAMGNTLQSFDRDHTFLYEKLYTGKPNLVNGLQARTFGIWTLLSSVIRCLCAID IHNKTLYHITLWTFLLALGHFLSELFVYGTAAPTIGVLAPLMVASFSILGMLVGLRYLEVEPVSRQKKRN
	<b>TRTRPLEQKLISEEDLAANDILDYKDDDDKV</b>
Tag:	C-Myc/DDK
Predicted MW:	15.7 kDa
Concentration:	>0.05 µg/µL as determined by microplate BCA method
Purity:	> 80% as determined by SDS-PAGE and Coomassie blue staining
Buffer:	25 mM Tris-HCl, 100 mM glycine, pH 7.3, 10% glycerol
Preparation:	Recombinant protein was captured through anti-DDK affinity column followed by conventional chromatography steps.
Note:	For testing in cell culture applications, please filter before use. Note that you may experience some loss of protein during the filtration process.
Storage:	Store at -80°C.
Stability:	Stable for 12 months from the date of receipt of the product under proper storage and handling conditions. Avoid repeated freeze-thaw cycles.
RefSeq:	<a href="#">NP_009107</a>
Locus ID:	11161
UniProt ID:	<a href="#">Q9UKR5</a> , <a href="#">Q6FII3</a> , <a href="#">Q86TW5</a>
RefSeq Size:	1576
Cytogenetics:	14q24.3



[View online »](#)

RefSeq ORF: 420  
Synonyms: C14orf1; NET51  
Protein Families: Transmembrane

### Product images:



Coomassie blue staining of purified ERG28 protein (Cat# TP300238). The protein was produced from HEK293T cells transfected with ERG28 cDNA clone (Cat# [RC200238]) using MegaTran 2.0 (Cat# [TT210002]).