

Product datasheet for **TP300237L**

PACSIN2 (NM_007229) Human Recombinant Protein

Product data:

Product Type:	Recombinant Proteins
Description:	Recombinant protein of human protein kinase C and casein kinase substrate in neurons 2 (PACSIN2), 1 mg
Species:	Human
Expression Host:	HEK293T
Expression cDNA	>RC200237 protein sequence
Clone or AA Sequence:	Red=Cloning site Green=Tags(s)

MSVTYDDSVGVEVSSDSFWEVGNKRTVKRIDDGHRCLSDLMNCLHERARIEKAYAQQLTEWARRWRQLV
EKGPQYGTVEKAWMAFMSEAEVSELHLEVKASLMNDDFEKIKNWQKEAFHKQMMGGFKETKEAEDGFRK
AQKPWAKKLKEVEAAKKAHHAACKEEKLAISREANSKADPSLNPEQLKKLQDKIEKCKQDVLKTKEKYEK
SLKELDQGTPQYMENMEQVFEQCQQFEEKRLRFFREVLLLEVQKHLDLNSVAGYKAIYHDLEQSIRAADAV
EDLRWFRANHGPGMAMNWPQFEWSADLNRTLRSREKKKATDGVTLTGINQTGDQSLPSKPSSTLNVPSN
PAQSAQSQSSYNPFEDDDTGSTVSEKDDTKAKNVSSYEKTSYPTDWSDDESNPFSSSTDANGDSNPF
DDATSGTEVRVRLDYEGQEHDELSFKAGDELTKMEDEDEQGWCKGRDLNQGVLGYPANYVEAIQ

TRTRPLEQKLISEEDLAANDILDYKDDDDKV

Tag:	C-Myc/DDK
Predicted MW:	55.6 kDa
Concentration:	>0.05 µg/µL as determined by microplate BCA method
Purity:	> 80% as determined by SDS-PAGE and Coomassie blue staining
Buffer:	25 mM Tris-HCl, 100 mM glycine, pH 7.3, 10% glycerol
Preparation:	Recombinant protein was captured through anti-DDK affinity column followed by conventional chromatography steps.
Note:	For testing in cell culture applications, please filter before use. Note that you may experience some loss of protein during the filtration process.
Storage:	Store at -80°C.
Stability:	Stable for 12 months from the date of receipt of the product under proper storage and handling conditions. Avoid repeated freeze-thaw cycles.



[View online >](#)

RefSeq: [NP_009160](#)

Locus ID: 11252

UniProt ID: [Q9UNF0](#)

RefSeq Size: 3292

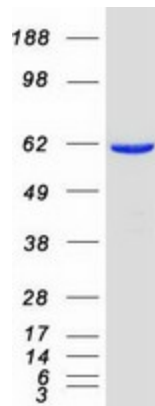
Cytogenetics: 22q13.2

RefSeq ORF: 1458

Synonyms: SDPII

Summary: This gene is a member of the protein kinase C and casein kinase substrate in neurons family. The encoded protein is involved in linking the actin cytoskeleton with vesicle formation by regulating tubulin polymerization. Alternative splicing results in multiple transcript variants. [provided by RefSeq, May 2010]

Product images:



Coomassie blue staining of purified PACSIN2 protein (Cat# [TP300237]). The protein was produced from HEK293T cells transfected with PACSIN2 cDNA clone (Cat# [RC200237]) using MegaTran 2.0 (Cat# [TT210002]).