

## Product datasheet for **TP300227L**

### TOLLIP (NM\_019009) Human Recombinant Protein

#### Product data:

Product Type:	Recombinant Proteins
Description:	Recombinant protein of human toll interacting protein (TOLLIP), 1 mg
Species:	Human
Expression Host:	HEK293T
Expression cDNA	>RC200227 protein sequence
Clone or AA Sequence:	Red=Cloning site Green=Tags(s)

MATTVSTQRGPVYIGELPQDFLRITPTQQQRQVQLDAQAAQQLQYGGAVGTVGRNLNITVVQAKLAKNYGM  
TRMDPYCRLRLGYAVYETPTAHNGAKNPRWNKVIHCTVPPGVDSFYLEIFDERAFSMDDRIAWTHITIFE  
SLRQGKVEDKWYLSGRQGDDKEGMINLVMSYALLPAAMVMPPQPVVLMPVYQQGVGYVPITGMPAVCS  
PGMVPVALPPAAVNAQPRCSEEDLKAIQDMFPNMDQEVIRSVLEAQRGNKDAAINSLLQMGEPP

TRTRPLEQKLISEEDLAANDILDYKDDDDKV

Tag:	C-Myc/DDK
Predicted MW:	30.1 kDa
Concentration:	>0.05 µg/µL as determined by microplate BCA method
Purity:	> 80% as determined by SDS-PAGE and Coomassie blue staining
Buffer:	25 mM Tris-HCl, 100 mM glycine, pH 7.3, 10% glycerol
Preparation:	Recombinant protein was captured through anti-DDK affinity column followed by conventional chromatography steps.
Note:	For testing in cell culture applications, please filter before use. Note that you may experience some loss of protein during the filtration process.
Storage:	Store at -80°C.
Stability:	Stable for 12 months from the date of receipt of the product under proper storage and handling conditions. Avoid repeated freeze-thaw cycles.
RefSeq:	<a href="#">NP_061882</a>
Locus ID:	54472
UniProt ID:	<a href="#">Q9H0E2</a> , <a href="#">Q6FIE9</a>



[View online »](#)

RefSeq Size: 3665

Cytogenetics: 11p15.5

RefSeq ORF: 822

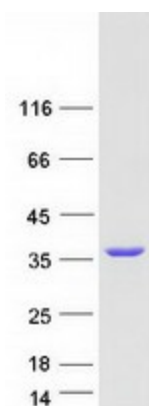
Synonyms: IL-1RAcPIP

**Summary:** This gene encodes a ubiquitin-binding protein that interacts with several Toll-like receptor (TLR) signaling cascade components. The encoded protein regulates inflammatory signaling and is involved in interleukin-1 receptor trafficking and in the turnover of IL1R-associated kinase. Several transcript variants encoding different isoforms have been found for this gene. [provided by RefSeq, Jan 2016]

**Protein Families:** Druggable Genome

**Protein Pathways:** Toll-like receptor signaling pathway

### Product images:



Coomassie blue staining of purified TOLLIP protein (Cat# [TP300227]). The protein was produced from HEK293T cells transfected with TOLLIP cDNA clone (Cat# [RC200227]) using MegaTran 2.0 (Cat# [TT210002]).