

Product datasheet for **TP300221M**

CRABP2 (NM_001878) Human Recombinant Protein

Product data:

Product Type:	Recombinant Proteins
Description:	Recombinant protein of human cellular retinoic acid binding protein 2 (CRABP2), 100 µg
Species:	Human
Expression Host:	HEK293T
Expression cDNA Clone or AA Sequence:	>RC200221 protein sequence Red =Cloning site Green =Tags(s)
	MPNFSGNWKIIRSENFEE LLKVLGVNVMLRKIAVA AASKPAVEIKQEGDTFYIKTSTTVRTEINFKVG E EFEEQTV DGRPCKSLVKWESENKMVCEQKLLKGEGPKTSWTRELTNDGELILMTADDVCTR VYVRE
	TRTRPLEQKLISEEDLAANDILDYKDDDDKV
Tag:	C-Myc/DDK
Predicted MW:	15.5 kDa
Concentration:	>0.05 µg/µL as determined by microplate BCA method
Purity:	> 80% as determined by SDS-PAGE and Coomassie blue staining
Buffer:	25 mM Tris-HCl, 100 mM glycine, pH 7.3, 10% glycerol
Preparation:	Recombinant protein was captured through anti-DDK affinity column followed by conventional chromatography steps.
Note:	For testing in cell culture applications, please filter before use. Note that you may experience some loss of protein during the filtration process.
Storage:	Store at -80°C.
Stability:	Stable for 12 months from the date of receipt of the product under proper storage and handling conditions. Avoid repeated freeze-thaw cycles.
RefSeq:	NP_001869
Locus ID:	1382
UniProt ID:	P29373
RefSeq Size:	1088
Cytogenetics:	1q23.1



[View online »](#)

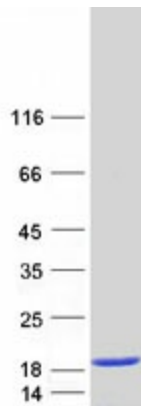
RefSeq ORF: 414

Synonyms: CRABP-II; RBP6

Summary: This gene encodes a member of the retinoic acid (RA, a form of vitamin A) binding protein family and lipocalin/cytosolic fatty-acid binding protein family. The protein is a cytosol-to-nuclear shuttling protein, which facilitates RA binding to its cognate receptor complex and transfer to the nucleus. It is involved in the retinoid signaling pathway, and is associated with increased circulating low-density lipoprotein cholesterol. Alternatively spliced transcript variants encoding the same protein have been found for this gene.[provided by RefSeq, Dec 2010]

Protein Families: Druggable Genome, Transcription Factors

Product images:



Coomassie blue staining of purified CRABP2 protein (Cat# [TP300221]). The protein was produced from HEK293T cells transfected with CRABP2 cDNA clone (Cat# [RC200221]) using MegaTran 2.0 (Cat# [TT210002]).