

Product datasheet for **TP300219M**

TMCO1 (NM_019026) Human Recombinant Protein

Product data:

Product Type: Recombinant Proteins
Description: Recombinant protein of human transmembrane and coiled-coil domains 1 (TMCO1), 100 µg
Species: Human
Expression Host: HEK293T
Expression cDNA Clone or AA Sequence: >RC200219 protein sequence
Red=Cloning site Green=Tags(s)

MSTMFADTLLIVFISVCTALLAEGITWVLVYRTDKYKRLKAEVEKQSKKLEKKKETITESAGRQKKKIE
 RQEEKLKNNNRDLSMVRMKSMFAIGFCFTALMGMFNSIFDGRVWAKLPFTPLSYIQGLSHRNLLGDDTT
 D
 CSFIFLYILCTMSIRQNIQKILGLAPSRAATKQAGGFLGPPPPSGKFS

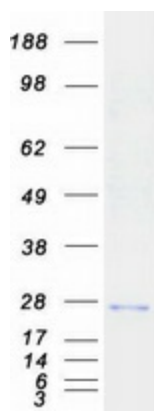
TRTRPLEQKLISEEDLAANDILDYKDDDDKV

Tag: C-Myc/DDK
Predicted MW: 21 kDa
Concentration: >0.05 µg/µL as determined by microplate BCA method
Purity: > 80% as determined by SDS-PAGE and Coomassie blue staining
Buffer: 25 mM Tris-HCl, 100 mM glycine, pH 7.3, 10% glycerol
Preparation: Recombinant protein was captured through anti-DDK affinity column followed by conventional chromatography steps.
Note: For testing in cell culture applications, please filter before use. Note that you may experience some loss of protein during the filtration process.
Storage: Store at -80°C.
Stability: Stable for 12 months from the date of receipt of the product under proper storage and handling conditions. Avoid repeated freeze-thaw cycles.
RefSeq: [NP_061899](#)
Locus ID: 54499
UniProt ID: [Q9UM00](#)


[View online »](#)

RefSeq Size:	4478
Cytogenetics:	1q24.1
RefSeq ORF:	564
Synonyms:	HP10122; PCIA3; PNAS-136; TMCC4
Summary:	This locus encodes a transmembrane protein. Mutations at this locus have been associated with craniofacial dysmorphism, skeletal anomalies, and cognitive disability. Mutations at this locus have also been associated with open angle glaucoma blindness. Alternatively spliced transcript variants have been described. [provided by RefSeq, Jan 2012]
Protein Families:	Transmembrane

Product images:



Coomassie blue staining of purified TMCO1 protein (Cat# [TP300219]). The protein was produced from HEK293T cells transfected with TMCO1 cDNA clone (Cat# [RC200219]) using MegaTran 2.0 (Cat# [TT210002]).