

Product datasheet for **TP300217M**

GTPBP6 (NM_012227) Human Recombinant Protein

Product data:

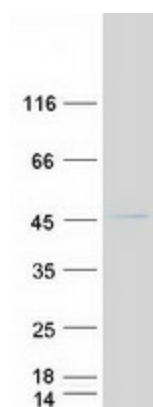
Product Type:	Recombinant Proteins
Description:	Recombinant protein of human GTP binding protein 6 (putative) (GTPBP6), 100 µg
Species:	Human
Expression Host:	HEK293T
Expression cDNA Clone or AA Sequence:	>RC200217 protein sequence Red =Cloning site Green =Tags(s)
	<p>MTRAEWQVAEATALVHTLDGWSVVQTMVSTKTPDRKLIFGKGNFEHLTEKIRGSPDVT CVFLNVERMA A PTKKELEAAWGVEVFDRTVLHIFRCNARTKEARLQVALAEMPLHRSNLKRDVAHLYRGVGSRYIMGSG ESFMQLQQRLLREKEAKIRKALDRLRKKRHLLRRQTRREFPVISVVGYNCGKTTLIKALTGDAAIQPR DQLFATLDVTAHAGTLP SRMTVLYVDTIGFLSQLPHGLIESFSATLEDVAHSDLILHVRDVSHPEAELQK CSVLSTLRGLQLPAPLLDSMVEVHNKVDLVPGYSPTEPNVVPVSALRGHGLQELKAELDAAVLKATGRQI LTLRVRLAGAQLSWLYKEATVQEVDVIPEDGAADVRVIISNSAYGKFRKLFPG</p> <p>TRTRPLEQKLISEEDLAANDILDYKDDDDKV</p>
Tag:	C-Myc/DDK
Predicted MW:	44.8 kDa
Concentration:	>0.05 µg/µL as determined by microplate BCA method
Purity:	> 80% as determined by SDS-PAGE and Coomassie blue staining
Buffer:	25 mM Tris-HCl, 100 mM glycine, pH 7.3, 10% glycerol
Preparation:	Recombinant protein was captured through anti-DDK affinity column followed by conventional chromatography steps.
Note:	For testing in cell culture applications, please filter before use. Note that you may experience some loss of protein during the filtration process.
Storage:	Store at -80°C.
Stability:	Stable for 12 months from the date of receipt of the product under proper storage and handling conditions. Avoid repeated freeze-thaw cycles.
RefSeq:	<u>NP_036359</u>



[View online »](#)

Locus ID:	8225
UniProt ID:	O43824
RefSeq Size:	1922
Cytogenetics:	X;Y
RefSeq ORF:	1209
Synonyms:	PGPL
Summary:	This gene encodes a GTP binding protein and is located in the pseudoautosomal region (PAR) at the end of the short arms of the X and Y chromosomes. [provided by RefSeq, Nov 2011]

Product images:



Coomassie blue staining of purified GTPBP6 protein (Cat# [TP300217]). The protein was produced from HEK293T cells transfected with GTPBP6 cDNA clone (Cat# [RC200217]) using MegaTran 2.0 (Cat# [TT210002]).