

Product datasheet for TP300217L

GTPBP6 (NM_012227) Human Recombinant Protein

Product data:

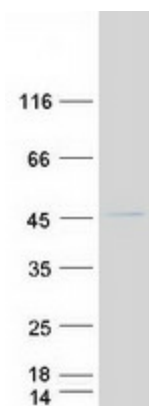
| | |
|---------------------------------------|-------------------------------------------------------------------------------------------------------------------------------------------------------------------------------------------------------------------------------------------------------------------------------------------------------------------------------------------------------------------------------------------------------------------------------------------|
| Product Type: | Recombinant Proteins |
| Description: | Recombinant protein of human GTP binding protein 6 (putative) (GTPBP6), 1 mg |
| Species: | Human |
| Expression Host: | HEK293T |
| Expression cDNA Clone or AA Sequence: | >RC200217 protein sequence Red =Cloning site Green =Tags(s) |
| | MTRAEWQVAEATALVHTLDGWSVVQTMVSTKTPDRKLIFGKGNFEHLTEKIRGSPDVTCVFLNVERMAA PTKKELEAAWGVEVDFRFTVVLHIFRCNARTKEARLQVALAEMPLHRSNLKRDDVAHLYRGVGSRYIMGSG ESFMQLQQRLLREKEAKIRKALDRLRKKRHLLRRQRTRREFPVISVVGYTNCGKTTLIKALTGDAAIQPR DQLFATLDVTAHAGTLPSRMTVLYVDTIGFLSQLPHGLIESFSATLEDVAHSDLILHVRDVSHPEAELQK CSVLSTLRGLQLPAPLLDSMVEVHNKVDLVPGYSPTEPNVVPVSALRGHGLQELKAELDAAVLKATGRQI LTLRVRLAGAQLSWLYKEATVQEVDVIPEDGAADV RVIIISNSAYGKFRKLFPG |
| | TR TRPLEQKLISEEDLAANDILDYKDDDDKV |
| Tag: | C-Myc/DDK |
| Predicted MW: | 44.8 kDa |
| Concentration: | >0.05 µg/µL as determined by microplate BCA method |
| Purity: | > 80% as determined by SDS-PAGE and Coomassie blue staining |
| Buffer: | 25 mM Tris-HCl, 100 mM glycine, pH 7.3, 10% glycerol |
| Preparation: | Recombinant protein was captured through anti-DDK affinity column followed by conventional chromatography steps. |
| Note: | For testing in cell culture applications, please filter before use. Note that you may experience some loss of protein during the filtration process. |
| Storage: | Store at -80°C. |
| Stability: | Stable for 12 months from the date of receipt of the product under proper storage and handling conditions. Avoid repeated freeze-thaw cycles. |
| RefSeq: | NP_036359 |
| Locus ID: | 8225 |



[View online »](#)

| | |
|---------------|------------------------------------------------------------------------------------------------------------------------------------------------------------------------------------|
| UniProt ID: | O43824 |
| RefSeq Size: | 1922 |
| Cytogenetics: | X;Y |
| RefSeq ORF: | 1209 |
| Synonyms: | PGPL |
| Summary: | This gene encodes a GTP binding protein and is located in the pseudoautosomal region (PAR) at the end of the short arms of the X and Y chromosomes. [provided by RefSeq, Nov 2011] |

Product images:



Coomassie blue staining of purified GTPBP6 protein (Cat# [TP300217]). The protein was produced from HEK293T cells transfected with GTPBP6 cDNA clone (Cat# [RC200217]) using MegaTran 2.0 (Cat# [TT210002]).