

Product datasheet for **TP300215M**

RABL4 (IFT27) (NM_006860) Human Recombinant Protein

Product data:

Product Type:	Recombinant Proteins
Description:	Recombinant protein of human RAB, member of RAS oncogene family-like 4 (RABL4), 100 µg
Species:	Human
Expression Host:	HEK293T
Expression cDNA Clone or AA Sequence:	>RC200215 protein sequence Red =Cloning site Green =Tags(s)
	 MVKLAAKCILAGDPAVGKTAQAIFRSDGAHFQKSYLTGMDLVKTVVPVDTGDSVELFIFDSAGKEL FSEMLDKLWESPNVLCVYDVTNEESFNCSKWLEKARSQAPGISLPGVLVGNKTDLAGRRRAVDSAEARA WALGQGLECFETSVKEMENFEAPFHCLAKQFHQLYREKVEVFRALA TRTRPLEQKLISEEDLAANDILDYKDDDDKV
Tag:	C-Myc/DDK
Predicted MW:	20.2 kDa
Concentration:	>0.05 µg/µL as determined by microplate BCA method
Purity:	> 80% as determined by SDS-PAGE and Coomassie blue staining
Buffer:	25 mM Tris-HCl, 100 mM glycine, pH 7.3, 10% glycerol
Preparation:	Recombinant protein was captured through anti-DDK affinity column followed by conventional chromatography steps.
Note:	For testing in cell culture applications, please filter before use. Note that you may experience some loss of protein during the filtration process.
Storage:	Store at -80°C.
Stability:	Stable for 12 months from the date of receipt of the product under proper storage and handling conditions. Avoid repeated freeze-thaw cycles.
RefSeq:	<u>NP_006851</u>
Locus ID:	11020
UniProt ID:	<u>Q9BW83</u>
RefSeq Size:	1101



[View online »](#)

Cytogenetics: 22q12.3

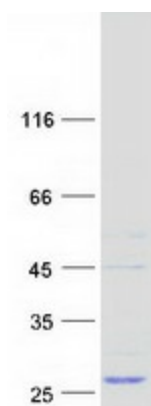
RefSeq ORF: 558

Synonyms: BBS19; FAP156; RABL4; RAYL

Summary: This gene encodes a GTP-binding protein that is a core component of the intraflagellar transport complex B. Characterization of the similar Chlamydomonas protein indicates a function in cell cycle control. Alternative splicing of this gene results in multiple transcript variants. [provided by RefSeq, Jan 2012]

Protein Families: Druggable Genome

Product images:



Coomassie blue staining of purified IFT27 protein (Cat# [TP300215]). The protein was produced from HEK293T cells transfected with IFT27 cDNA clone (Cat# [RC200215]) using MegaTran 2.0 (Cat# [TT210002]).