

Product datasheet for **TP300205M**

Testin (TES) (NM_015641) Human Recombinant Protein

Product data:

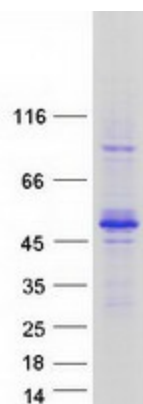
Product Type:	Recombinant Proteins
Description:	Recombinant protein of human testis derived transcript (3 LIM domains) (TES), transcript variant 1, 100 µg
Species:	Human
Expression Host:	HEK293T
Expression cDNA Clone or AA Sequence:	>RC200205 protein sequence Red =Cloning site Green =Tags(s)
	MDLENKVKKMGLGHEQGFGAPCLKCKEKEGFEHFWRKICRNCKGQEEHDVLLSNEEDRKVGKLFED T KYTTLIAKLKSDGIPMYKRNVMILTNPVAAKKNVSINTVTYEWAPPVQNQALARQYMQMLPKEKQPVAGS EGAQYRKKQLAKQLPAHDQDPSKCHELSPREVKEMEQFVKKYKSEALGVGDVKLPCEMDAQQGPKQMNI PG GDRSTPAAVGAMEDKSAEHKRTQYSCYCKLSMKEGDPAIYAERAGYDKLWHPACFVCSTCHELLVDMY FWKNEKLYCGRHYCDSEKPRCAGCDELIFSNEYTQAENQNWHLKHFFCCFDCDSILAGEIYVMVNDKPVCK PCYVKNHAWVCQGCHNAIDPEVQRVTYNNFSWHASTECFLCSCCSKCLIGQKFMPVEGMVFCSVECKKR M S SGPTRTRPLEQKLISEEDLAANDILDYKDDDDKV
Tag:	C-Myc/DDK
Predicted MW:	47.8 kDa
Concentration:	>0.05 µg/µL as determined by microplate BCA method
Purity:	> 80% as determined by SDS-PAGE and Coomassie blue staining
Buffer:	25 mM Tris-HCl, 100 mM glycine, pH 7.3, 10% glycerol
Preparation:	Recombinant protein was captured through anti-DDK affinity column followed by conventional chromatography steps.
Note:	For testing in cell culture applications, please filter before use. Note that you may experience some loss of protein during the filtration process.
Storage:	Store at -80°C.



[View online »](#)

Stability:	Stable for 12 months from the date of receipt of the product under proper storage and handling conditions. Avoid repeated freeze-thaw cycles.
RefSeq:	<u>NP_056456</u>
Locus ID:	26136
UniProt ID:	<u>Q9UGI8</u>
RefSeq Size:	2799
Cytogenetics:	7q31.2
RefSeq ORF:	1263
Synonyms:	TESS; TESS-2
Summary:	Cancer-associated chromosomal changes often involve regions containing fragile sites. This gene maps to a common fragile site on chromosome 7q31.2 designated FRA7G. This gene is similar to mouse Testin, a testosterone-responsive gene encoding a Sertoli cell secretory protein containing three LIM domains. LIM domains are double zinc-finger motifs that mediate protein-protein interactions between transcription factors, cytoskeletal proteins and signaling proteins. This protein is a negative regulator of cell growth and may act as a tumor suppressor. This scaffold protein may also play a role in cell adhesion, cell spreading and in the reorganization of the actin cytoskeleton. Multiple protein isoforms are encoded by transcript variants of this gene.[provided by RefSeq, Mar 2011]

Product images:



Coomassie blue staining of purified TES protein (Cat# [TP300205]). The protein was produced from HEK293T cells transfected with TES cDNA clone (Cat# [RC200205]) using MegaTran 2.0 (Cat# [TT210002]).