

Product datasheet for TP300181L

TENT5A (NM_017633) Human Recombinant Protein

Product data:

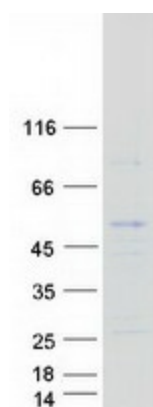
Product Type:	Recombinant Proteins
Description:	Recombinant protein of human family with sequence similarity 46, member A (FAM46A), 1 mg
Species:	Human
Expression Host:	HEK293T
Expression cDNA Clone or AA Sequence:	>RC200181 protein sequence Red =Cloning site Green =Tags(s)
	<pre>MAEGEGYFAMSEDELACSPYIPLGGDFGGGDFGGGDFGGGDFGGGDFGGGDFGGGHCLDYCESPTAHCNVLNWEQ VQRDLGILSETIPIHGRGNFPTLELQPSLIVKVVRRRLAEKRIGVRDVRNLNGSAASHVLHQDSGLGYKDL DLIFCADLRGEGEFQTVKDVLDCLLDFLPEGVNKEKITPLTLKEAYVQKMVKVCNDSRWSLISLSNNS GKNVELKFVDSLRRQFEFSVDSFQIKLDSLLLFECSNPMTETFHPTIIGESVYGDFQEAFDHLCKNII ATRNPPEIRGGGLLKYCENLLVRGFRPASDEIKTLQRYMCSRFFIDFSDIGEQQRKLESYLNHFVGLDR KYEYLMTLHGWNSTVCLMGHERRQTLNLITMLAIRVLADQNVIPNVANVTCYYQPAPYVADANFSNYY IAQVQPVFTCCQQTYSTWLPCN</pre> <p>TRTRPLEQKLISEEDLAANDILDYKDDDDKV</p>
Tag:	C-Myc/DDK
Predicted MW:	49.5 kDa
Concentration:	>0.05 µg/µL as determined by microplate BCA method
Purity:	> 80% as determined by SDS-PAGE and Coomassie blue staining
Buffer:	25 mM Tris-HCl, 100 mM glycine, pH 7.3, 10% glycerol
Preparation:	Recombinant protein was captured through anti-DDK affinity column followed by conventional chromatography steps.
Note:	For testing in cell culture applications, please filter before use. Note that you may experience some loss of protein during the filtration process.
Storage:	Store at -80°C.
Stability:	Stable for 12 months from the date of receipt of the product under proper storage and handling conditions. Avoid repeated freeze-thaw cycles.
RefSeq:	<u>NP_060103</u>



[View online »](#)

Locus ID:	55603
UniProt ID:	Q96IP4
RefSeq Size:	5617
Cytogenetics:	6q14.1
RefSeq ORF:	1326
Synonyms:	C6orf37; FAM46A; OI18; XTP11
Summary:	Probable nucleotidyltransferase that may act as a non-canonical poly(A) RNA polymerase. [UniProtKB/Swiss-Prot Function]

Product images:



Coomassie blue staining of purified TENT5A protein (Cat# [TP300181]). The protein was produced from HEK293T cells transfected with TENT5A cDNA clone (Cat# [RC200181]) using MegaTran 2.0 (Cat# [TT210002]).