

Product datasheet for TP300180

KCTD5 (NM_018992) Human Recombinant Protein

Product data:

Product Type:	Recombinant Proteins
Description:	Recombinant protein of human potassium channel tetramerisation domain containing 5 (KCTD5), 20 µg
Species:	Human
Expression Host:	HEK293T
Expression cDNA Clone or AA Sequence:	>RC200180 protein sequence Red =Cloning site Green =Tags(s)
	MAENHCELLSPARGGIGAGLGGGLCRRCAGLALGALAQRPGSVSKWVRLNVGGTYFLTTRQTLCRDPKSFLYRLCQADPDLSDKDETGAYLIDRDPTYFGPVLNLYLRHGKLVINKDLAEEGVLEEAFFYNITSLIKLVKDKIRERDSKTSQVPVKHVYRVLQCQEEELTQMVSTMSDGWKFEQLVLSIGSSYNYGNEDQAEFLCVSKELHNTPYGTASEPSEKAKILQERGRM
	TRTRPLEQKLISEEDLAANDILDYKDDDDKV
Tag:	C-Myc/DDK
Predicted MW:	25.9 kDa
Concentration:	>0.05 µg/µL as determined by microplate BCA method
Purity:	> 80% as determined by SDS-PAGE and Coomassie blue staining
Buffer:	25 mM Tris-HCl, 100 mM glycine, pH 7.3, 10% glycerol
Preparation:	Recombinant protein was captured through anti-DDK affinity column followed by conventional chromatography steps.
Note:	For testing in cell culture applications, please filter before use. Note that you may experience some loss of protein during the filtration process.
Storage:	Store at -80°C.
Stability:	Stable for 12 months from the date of receipt of the product under proper storage and handling conditions. Avoid repeated freeze-thaw cycles.
RefSeq:	<u>NP_061865</u>
Locus ID:	54442



[View online »](#)

UniProt ID: [Q9NXV2](#)

RefSeq Size: 2479

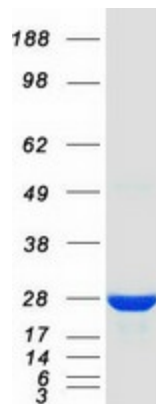
Cytogenetics: 16p13.3

RefSeq ORF: 702

Summary: Its interaction with CUL3 suggests that it may act as a substrate adapter in some E3 ligase complex (PubMed:18573101). Does not affect the function of Kv channel Kv2.1/KCNB1, Kv1.2/KCNA2, Kv4.2/KCND2 and Kv3.4/KCNC4 (PubMed:19361449).[UniProtKB/Swiss-Prot Function]

Protein Families: Ion Channels: Other

Product images:



Coomassie blue staining of purified KCTD5 protein (Cat# TP300180). The protein was produced from HEK293T cells transfected with KCTD5 cDNA clone (Cat# [RC200180]) using MegaTran 2.0 (Cat# [TT210002]).