

Product datasheet for **TP300152L**

GMEB1 (NM_024482) Human Recombinant Protein

Product data:

Product Type:	Recombinant Proteins
Description:	Recombinant protein of human glucocorticoid modulatory element binding protein 1 (GMEB1), transcript variant 2, 1 mg
Species:	Human
Expression Host:	HEK293T
Expression cDNA Clone or AA Sequence:	>RC200152 protein sequence Red =Cloning site Green =Tags(s)

MANAEVSVVPGDVVVVPTTEGNEGENPEDTKTQVILQLQPVQQGIYEAGSENNTAVVAVETHHTIHKIEEGIDTGTIEANEDMEIAYPITCGESKAILLWKKFVCPGINVKCVKFNDQLISPKHFVHLAGKSTLKDWKRAIRLGGIMLRKMMDSGQIDFYQHDKVCSNTRSTKFDLLISSARAPVPGQQTTSVVQTPTSADGSITQIAISEESMEEAGLEWNSALTAAVTMATEEGVKKDSEEISEDTLMFWKGIADVGLMEEVVCNIQKEIEELLRGVQQRLLIQAPFQVTDAAVLNNVAHTFGLMDTVKKVLDNRRNQVEQGEEQFLYTLTDLERQLEEQKKQGQDHRLLKSTVQVNVVLPVSTPKPPKRPRLRPASTTVLSPSPVQPPQFTVISPITITPVGQSFSGMGNIPVATLSQSSPVTVHTLPSGPQLFRYATVWSSAKSSSPDVTIHPSSSLALLSSTAMQDGSTLGNMTTMVSPVELVAMESGLTSAIQAVESTSEDGQTIIIDPAPDPEAEDTEGKAVILETELRTTEEKVVAEMEEHQHVHNVVEIVLED

TRTRPLEQKLISEEDLAANDILDYKDDDDKV

Tag:	C-Myc/DDK
Predicted MW:	61.1 kDa
Concentration:	>0.05 µg/µL as determined by microplate BCA method
Purity:	> 80% as determined by SDS-PAGE and Coomassie blue staining
Buffer:	25 mM Tris-HCl, 100 mM glycine, pH 7.3, 10% glycerol
Preparation:	Recombinant protein was captured through anti-DDK affinity column followed by conventional chromatography steps.
Note:	For testing in cell culture applications, please filter before use. Note that you may experience some loss of protein during the filtration process.
Storage:	Store at -80°C.



[View online »](#)

Stability: Stable for 12 months from the date of receipt of the product under proper storage and handling conditions. Avoid repeated freeze-thaw cycles.

RefSeq: [NP_077808](#)

Locus ID: 10691

UniProt ID: [Q9Y692](#), [B1AT47](#)

RefSeq Size: 2661

Cytogenetics: 1p35.3

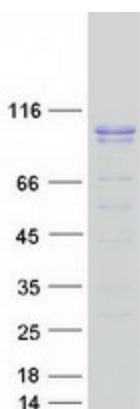
RefSeq ORF: 1689

Synonyms: P96PIF; PIF96

Summary: This gene encodes a member of KDWK gene family which associates with GMEB2 protein. The GMEB1-GMEB2 complex is essential for parvovirus DNA replication. Studies in rat for a similar gene suggest that this gene's role is to modulate the transactivation of the glucocorticoid receptor when it is bound to glucocorticoid response elements. Three alternative spliced transcript variants encoding different isoforms exist. [provided by RefSeq, Feb 2016]

Protein Families: Druggable Genome, Transcription Factors

Product images:



Coomassie blue staining of purified GMEB1 protein (Cat# [TP300152]). The protein was produced from HEK293T cells transfected with GMEB1 cDNA clone (Cat# [RC200152]) using MegaTran 2.0 (Cat# [TT210002]).