

Product datasheet for TP300139L

ENTR1 (NM_006643) Human Recombinant Protein

Product data:

Product Type:	Recombinant Proteins
Description:	Recombinant protein of human serologically defined colon cancer antigen 3 (SDCCAG3), transcript variant 2, 1 mg
Species:	Human
Expression Host:	HEK293T
Expression cDNA Clone or AA Sequence:	>RC200139 protein sequence Red =Cloning site Green =Tags(s)
	<p>MSGYQRHPGATPLSRARSLAIPDAPAFYERRSCLPQLNCERPHGRDLDSPFFGIRPAFMCYVPSVPLASV GDTDDRFEDLEEANPFSFREFLKTKNLGLSKEDPASRIYAKEASRHSGLGDHNSPPSQTGGYGLEYQQPF FEDPTGAGDLLDGEEDDTGWSGAYLPSAIEQTHPERVPAGTSPCSTYLSFFSTPSELAGPESLPSWALS DTDSRVSPASPAGSPSADFAVHGESLGDRHLRTLQISYDALKDENSKLRRKLNEVQSFSEAQTEMVRTLE RKLEAKMIKEESDYHDLESVQVQVEQNLELMTKRAVKAENHVVKLKQEISLLQAQVSNFQRENEALRCGQ GASLTVVKQNADVALQNLRVVMNSAQASIKQLVSGAETLNLVAEILKSIDRISEIKDEEEDS</p> <p>TRTRPLEQKLISEEDLAANDILDYKDDDDKV</p>
Tag:	C-Myc/DDK
Predicted MW:	45.4 kDa
Concentration:	>0.05 µg/µL as determined by microplate BCA method
Purity:	> 80% as determined by SDS-PAGE and Coomassie blue staining
Buffer:	25 mM Tris-HCl, 100 mM glycine, pH 7.3, 10% glycerol
Preparation:	Recombinant protein was captured through anti-DDK affinity column followed by conventional chromatography steps.
Note:	For testing in cell culture applications, please filter before use. Note that you may experience some loss of protein during the filtration process.
Storage:	Store at -80°C.
Stability:	Stable for 12 months from the date of receipt of the product under proper storage and handling conditions. Avoid repeated freeze-thaw cycles.
RefSeq:	NP_006634

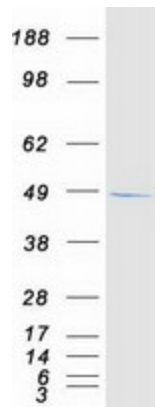


[View online »](#)

Locus ID:	10807
UniProt ID:	Q96C92
RefSeq Size:	2321
Cytogenetics:	9q34.3
RefSeq ORF:	1236
Synonyms:	NY-CO-3; SDCCAG3; SDDAG3

Summary: Endosome-associated protein that plays a role in membrane receptor sorting, cytokinesis and ciliogenesis (PubMed:23108400, PubMed:25278552, PubMed:27767179). Involved in the endosome-to-plasma membrane trafficking and recycling of SNX27-retromer-dependent cargo proteins, such as GLUT1 (PubMed:25278552). Involved in the regulation of cytokinesis; the function may involve PTPN13 and GIT1 (PubMed:23108400). Plays a role in the formation of cilia (PubMed:27767179). Involved in cargo protein localization, such as PKD2, at primary cilia (PubMed:27767179). Involved in the presentation of the tumor necrosis factor (TNF) receptor TNFRSF1A on the cell surface, and hence in the modulation of the TNF-induced apoptosis (By similarity).[UniProtKB/Swiss-Prot Function]

Product images:



Coomassie blue staining of purified ENTR1 protein (Cat# [TP300139]). The protein was produced from HEK293T cells transfected with ENTR1 cDNA clone (Cat# [RC200139]) using MegaTran 2.0 (Cat# [TT210002]).