

Product datasheet for **TP300135M**

ARMC1 (NM_018120) Human Recombinant Protein

Product data:

Product Type: Recombinant Proteins

Description: Recombinant protein of human armadillo repeat containing 1 (ARMC1), 100 µg

Species: Human

Expression Host: HEK293T

Expression cDNA Clone or AA Sequence: >RC200135 protein sequence
Red=Cloning site **Green**=Tags(s)

MNSSTSTMSEEPDALSVVNQLRDLAADPLNRRRAIVQDQGCLPGLILFMDHPNPPVHSAALLALRYLAECR
ANREKMKGELGMMLSLQNVIQKTTTPGETKLLASEIYDILQSSNMADGDSFNEMNSRRRKAQFFLGTTNK
RAKTVVLHIDGLDDTSRRNLCEEALLKIKGVISFTFQMAVQRCVVRIRSDLKAEALASAIASTKVMKAQQ
VVKSESGEEMLVPFQDTPVEVEQNTLPDYLPEDESPTKEQDKAVSRVGSHPGEGASWLSTAANFLSRSF
YW

TRTRPLEQKLISEEDLAANDILDYKDDDDKV

Tag: C-Myc/DDK

Predicted MW: 31.1 kDa

Concentration: >0.05 µg/µL as determined by microplate BCA method

Purity: > 80% as determined by SDS-PAGE and Coomassie blue staining

Buffer: 25 mM Tris-HCl, 100 mM glycine, pH 7.3, 10% glycerol

Preparation: Recombinant protein was captured through anti-DDK affinity column followed by conventional chromatography steps.

Note: For testing in cell culture applications, please filter before use. Note that you may experience some loss of protein during the filtration process.

Storage: Store at -80°C.

Stability: Stable for 12 months from the date of receipt of the product under proper storage and handling conditions. Avoid repeated freeze-thaw cycles.

RefSeq: [NP_060590](#)

Locus ID: 55156



[View online »](#)

UniProt ID: [Q9NVT9](#)

RefSeq Size: 3051

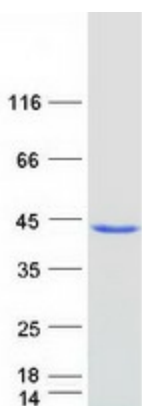
Cytogenetics: 8q13.1

RefSeq ORF: 846

Synonyms: Arcp

Summary: In association with mitochondrial contact site and cristae organizing system (MICOS) complex components and mitochondrial outer membrane sorting assembly machinery (SAM) complex components may regulate mitochondrial dynamics playing a role in determining mitochondrial length, distribution and motility.[UniProtKB/Swiss-Prot Function]

Product images:



Coomassie blue staining of purified ARMC1 protein (Cat# [TP300135]). The protein was produced from HEK293T cells transfected with ARMC1 cDNA clone (Cat# [RC200135]) using MegaTran 2.0 (Cat# [TT210002]).