

Product datasheet for **TP300135L**

ARMC1 (NM_018120) Human Recombinant Protein

Product data:

Product Type:	Recombinant Proteins
Description:	Recombinant protein of human armadillo repeat containing 1 (ARMC1), 1 mg
Species:	Human
Expression Host:	HEK293T
Expression cDNA Clone or AA Sequence:	>RC200135 protein sequence Red =Cloning site Green =Tags(s)
	<p>MNSSTSTMSEEPDALSVVNQLRDLAADPLNRRRAIVQDQGCLPGLILFMDHPNPPVHSAALLALRYLAECR ANREKMKGELGMMLSLQNVIQKTTTPGETKLLASEIYDILQSSNMADGDSFNEMNSRRRKAQFFLGTTNK RAKTVVLHIDGLDDTSRRNLCEEALLKIKGVISFTFQMAVQRCVVRIRSDLKAEALASAIASTKVMKAQQ VVKSESGEEMLVPFQDTPVEVEQNTLPDYLPEDESPTKEQDKAVSRVGSHPPEGASWLSTAANFLSRSF YW</p> <p>TRTRPLEQKLISEEDLAANDILDYKDDDDKV</p>
Tag:	C-Myc/DDK
Predicted MW:	31.1 kDa
Concentration:	>0.05 µg/µL as determined by microplate BCA method
Purity:	> 80% as determined by SDS-PAGE and Coomassie blue staining
Buffer:	25 mM Tris-HCl, 100 mM glycine, pH 7.3, 10% glycerol
Preparation:	Recombinant protein was captured through anti-DDK affinity column followed by conventional chromatography steps.
Note:	For testing in cell culture applications, please filter before use. Note that you may experience some loss of protein during the filtration process.
Storage:	Store at -80°C.
Stability:	Stable for 12 months from the date of receipt of the product under proper storage and handling conditions. Avoid repeated freeze-thaw cycles.
RefSeq:	<u>NP_060590</u>
Locus ID:	55156

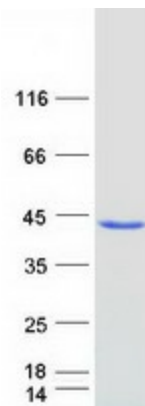


[View online »](#)

UniProt ID: [Q9NVT9](#)
RefSeq Size: 3051
Cytogenetics: 8q13.1
RefSeq ORF: 846
Synonyms: Arcp

Summary: In association with mitochondrial contact site and cristae organizing system (MICOS) complex components and mitochondrial outer membrane sorting assembly machinery (SAM) complex components may regulate mitochondrial dynamics playing a role in determining mitochondrial length, distribution and motility.[UniProtKB/Swiss-Prot Function]

Product images:



Coomassie blue staining of purified ARMC1 protein (Cat# [TP300135]). The protein was produced from HEK293T cells transfected with ARMC1 cDNA clone (Cat# [RC200135]) using MegaTran 2.0 (Cat# [TT210002]).