

## Product datasheet for TP300132L

### REC8 (NM\_005132) Human Recombinant Protein

#### Product data:

Product Type:	Recombinant Proteins
Description:	Recombinant protein of human REC8 homolog (yeast) (REC8), transcript variant 1, 1 mg
Species:	Human
Expression Host:	HEK293T
Expression cDNA Clone or AA Sequence:	>RC200132 protein sequence <b>Red</b> =Cloning site <b>Green</b> =Tags(s)
	<p>MFYYPNVLQRHTGCFATIWLAATRGSRLVKREYLRVNVVKTCEEILNYVLVRVQPPQPGLPRPRFSLYLS AQLQIGVIRVYSQQCQYLVEDIQHILERLHRAQLQIRIDMETELPSLLLPNHLLAMMETLEDAPDPFFGMM SVDPRLPSPFDIPQIRHLLAAIPERVEEIPPEVPTPREPERIPVTVLPPEAITILEAEPIRMLEIEGE RELPEVSRRELDLLIAEEEEAILLEIPRLPPPAPAEVEGIGEALGPEELRLTGWEPGALLMEVTPPEELR LPAPPSPERRPPVPPPPRRRRRRRLLFWDKETQISPEKFQEQLQTRAHCWECMPVQPPERTIRGPAELFR TPTLSGWLPELLGLWTHCAQPPPKALRRELPEEAAAEEERRKIEVPSEIEVPREALEPSVPLMVSLEIS LEAAEEEEKSRLIPPEERWAWPEVEAPEAPALPVPELPEVPMEMPLVLPPELELLSLEAVHRAVALEL QANREPDFSSLSPLSPRRMAARVFYLLLVLSAQQLHVKQEKPYGRLLIQPGPRFH</p> <p><b>TRTRPLEQKLISEEDLAANDILDYKDDDDKV</b></p>
Tag:	C-Myc/DDK
Predicted MW:	62.4 kDa
Concentration:	>0.05 µg/µL as determined by microplate BCA method
Purity:	> 80% as determined by SDS-PAGE and Coomassie blue staining
Buffer:	25 mM Tris-HCl, 100 mM glycine, pH 7.3, 10% glycerol
Preparation:	Recombinant protein was captured through anti-DDK affinity column followed by conventional chromatography steps.
Note:	For testing in cell culture applications, please filter before use. Note that you may experience some loss of protein during the filtration process.
Storage:	Store at -80°C.
Stability:	Stable for 12 months from the date of receipt of the product under proper storage and handling conditions. Avoid repeated freeze-thaw cycles.



[View online »](#)

RefSeq: [NP\\_005123](#)

Locus ID: 9985

UniProt ID: [O95072](#)

RefSeq Size: 2253

Cytogenetics: 14q12

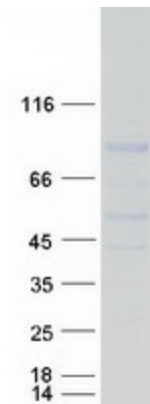
RefSeq ORF: 1641

Synonyms: HR21spB; REC8L1; Rec8p

**Summary:** This gene encodes a member of the kleisin family of SMC (structural maintenance of chromosome) protein partners. The protein localizes to the axial elements of chromosomes during meiosis in both oocytes and spermatocytes. In the mouse, the homologous protein is a key component of the meiotic cohesion complex, which regulates sister chromatid cohesion and recombination between homologous chromosomes. Multiple alternatively spliced variants, encoding the same protein, have been found for this gene. [provided by RefSeq, Jul 2008]

**Protein Pathways:** Oocyte meiosis

### Product images:



Coomassie blue staining of purified REC8 protein (Cat# [TP300132]). The protein was produced from HEK293T cells transfected with REC8 cDNA clone (Cat# [RC200132]) using MegaTran 2.0 (Cat# [TT210002]).