

## Product datasheet for TP300121L

### THUMPD3 (NM\_015453) Human Recombinant Protein

#### Product data:

Product Type:	Recombinant Proteins
Description:	Recombinant protein of human THUMP domain containing 3 (THUMPD3), transcript variant 1, 1 mg
Species:	Human
Expression Host:	HEK293T
Expression cDNA Clone or AA Sequence:	>RC200121 protein sequence <b>Red</b> =Cloning site <b>Green</b> =Tags(s)

MCDIEEATNQLLDVNLHENQKSVQVTESDLGSESELLVTIGATVPTGFEQTAADDEVREKLGSSCKISRDR  
GKIYFVISVESLAQVHCLRSVDNLFVVVQEFQDYQFKQTKEEVLKDFEDLAGKLPWSNPLKWWKINASF  
KKKAKRKKINQNSSKEKINNGQEVKIDQRNVKKEFTSHALDSHILDYYENPAIKEDVSTLIGDDLASCKD  
ETDESSKEETEPQVLKFRVTCNRAGEKHCFTSNEAARDFGGAVQDYFKWKADMTNFDVEVLLNIHDNEVI  
VGIALTEESLHRRNITHFGPTTLRSTLAYGMLRLCDPLPYDIIVDPMC GTGAIPIEGATEWSDCFHIAGD  
NNPLAVNRAANNIASLLTKSQIKEGKPSWGLPIDAVQWDICNPLRTGSVDIIVTDL PFGKRMGSKKRNW  
NLYPACLREMSRVCTPTTGRAVLLTQDTKCFKALSGMRHVWRKVDTVWVNVGGLRAAVYVLI RTPQAFV  
HPSEQDGERGTLWQCKE

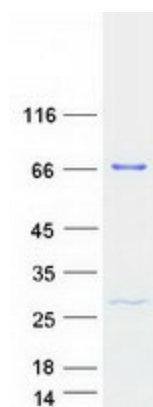
**TRTRPLEQKLISEEDLAANDILDYKDDDDKV**

Tag:	C-Myc/DDK
Predicted MW:	56.8 kDa
Concentration:	>0.05 µg/µL as determined by microplate BCA method
Purity:	> 80% as determined by SDS-PAGE and Coomassie blue staining
Buffer:	25 mM Tris-HCl, 100 mM glycine, pH 7.3, 10% glycerol
Preparation:	Recombinant protein was captured through anti-DDK affinity column followed by conventional chromatography steps.
Note:	For testing in cell culture applications, please filter before use. Note that you may experience some loss of protein during the filtration process.
Storage:	Store at -80°C.



[View online »](#)

Stability:	Stable for 12 months from the date of receipt of the product under proper storage and handling conditions. Avoid repeated freeze-thaw cycles.
RefSeq:	<a href="#">NP_056268</a>
Locus ID:	25917
UniProt ID:	<a href="#">Q9BV44</a> , <a href="#">A0A024R2D3</a>
RefSeq Size:	3980
Cytogenetics:	3p25.3
RefSeq ORF:	1521

**Product images:**

Coomassie blue staining of purified THUMPD3 protein (Cat# [TP300121]). The protein was produced from HEK293T cells transfected with THUMPD3 cDNA clone (Cat# [RC200121]) using MegaTran 2.0 (Cat# [TT210002]).