

## Product datasheet for TP300118

### RAI3 (GPCR5A) (NM\_003979) Human Recombinant Protein

#### Product data:

Product Type:	Recombinant Proteins
Description:	Recombinant protein of human G protein-coupled receptor, family C, group 5, member A (GPCR5A), 20 µg
Species:	Human
Expression Host:	HEK293T
Expression cDNA Clone or AA Sequence:	>RC200118 protein sequence <b>Red</b> =Cloning site <b>Green</b> =Tags(s)
	MATTVPDGCGRNGLKSKYYRLCDKAEAWGIVLETVATAGVWTSVAFMLTLPILVCKVQDSNRRKMLPTQFL FLLGVLGIFGLTFAFIIGLDGSTGPTRFFLFGILFSICFSCLLAHAVSLTKLVRGRKPLSLLVILGLAVG FSLVQDVIAIEYIVLTMNRTNVNVFSELSAPRRNEDFVLLTYVLFMLALTFLMSSFTFCGSFTGWKRHG AHIYLTMLLSIAIWWAWITLLMLPDFDRRWDDTILSSALAANGWVFLLAYVSPEFWLLTKQRNPMDDYPVE DAFCKPQLVKKSYGVENRAYSQEEITQGFEEETGDTLYAPYSTHFQLQNQPPQKEFSIPRAHAWPSPYKDY EVKKEGS
	<b>TRTRPLEQKLISEEDLAANDILDYKDDDDKV</b>
Tag:	C-Myc/DDK
Predicted MW:	40.1 kDa
Concentration:	>0.05 µg/µL as determined by microplate BCA method
Purity:	> 80% as determined by SDS-PAGE and Coomassie blue staining
Buffer:	25 mM Tris-HCl, 100 mM glycine, pH 7.3, 10% glycerol
Preparation:	Recombinant protein was captured through anti-DDK affinity column followed by conventional chromatography steps.
Note:	For testing in cell culture applications, please filter before use. Note that you may experience some loss of protein during the filtration process.
Storage:	Store at -80°C.
Stability:	Stable for 12 months from the date of receipt of the product under proper storage and handling conditions. Avoid repeated freeze-thaw cycles.
RefSeq:	<u><a href="#">NP_003970</a></u>



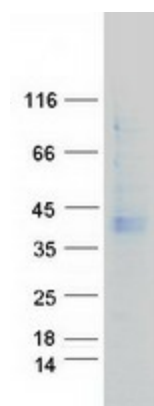
[View online »](#)

Locus ID: 9052  
UniProt ID: [Q8NFJ5](#)  
RefSeq Size: 2856  
Cytogenetics: 12p13.1  
RefSeq ORF: 1071  
Synonyms: GPCR5A; PEIG-1; RAI3; RAIG1; TIG1

**Summary:** This gene encodes a member of the type 3 G protein-coupling receptor family, characterized by the signature 7-transmembrane domain motif. The encoded protein may be involved in interaction between retinoid acid and G protein signalling pathways. Retinoic acid plays a critical role in development, cellular growth, and differentiation. This gene may play a role in embryonic development and epithelial cell differentiation. [provided by RefSeq, Jul 2008]

**Protein Families:** Druggable Genome, GPCR, Transmembrane

### Product images:



Coomassie blue staining of purified GPCR5A protein (Cat# TP300118). The protein was produced from HEK293T cells transfected with GPCR5A cDNA clone (Cat# [RC200118]) using MegaTran 2.0 (Cat# [TT210002]).