

Product datasheet for TP300110M

CBF19L1 (NM_018294) Human Recombinant Protein

Product data:

Product Type:	Recombinant Proteins
Description:	Recombinant protein of human CBF19-like 1, cell cycle control (S. pombe) (CBF19L1), 100 µg
Species:	Human
Expression Host:	HEK293T
Expression cDNA Clone or AA Sequence:	>RC200110 protein sequence Red =Cloning site Green =Tags(s)

MAQKPLRLLACGDVEGKFDILFNRVQAIQKKSGNFDLLLCVGNFFGSTQDAEWEEYKTGIKKVPIQTYVL
GANNQETVKYFQDADGCELAENITYLGRKGIFTGSSGLQIVYLSGTESLNEPVPGYSFSPKDVSSLRMML
CTTSQFKGVDILLTSPWPKCVGNFGNSSGEVDTKKCGSALVSSLATGLKPRYHFAALEKTYERLPYRNH
IILQENAQHATRFIALANVGNPEKKKYLYAFSIVPMKLMDDAAELVKQPPDVTENPYRKSQGEASIGKQIL
APVEESACQFFFDLNEKQGRKRSSTGRDSKSSPHPKQPRKPPQPPGPCWFCLASPEVEKHLVNIHTHCY
LALAKGGLSDDHVLILPIGHYQSWELSAEVEVEKEYKATLRRFFKSRGKWCVVFERNYKSHHLQLQVI
PVPISCSTTDDIKDAFITQAQEQQIELLEIPEHSDIKIAQPGAAYFYVELDTGEKLFHRIKKNFPLQFG
REVLASEAILNVPDKSDWRQCQISKEDEETLARRFRKDFEPYDFTLDD

SGPTRTRPLEQKLISEEDLAANDILDYKDDDDKV

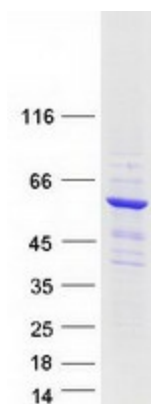
Tag:	C-Myc/DDK
Predicted MW:	60.4 kDa
Concentration:	>0.05 µg/µL as determined by microplate BCA method
Purity:	> 80% as determined by SDS-PAGE and Coomassie blue staining
Buffer:	25 mM Tris-HCl, 100 mM glycine, pH 7.3, 10% glycerol
Preparation:	Recombinant protein was captured through anti-DDK affinity column followed by conventional chromatography steps.
Note:	For testing in cell culture applications, please filter before use. Note that you may experience some loss of protein during the filtration process.
Storage:	Store at -80°C.
Stability:	Stable for 12 months from the date of receipt of the product under proper storage and handling conditions. Avoid repeated freeze-thaw cycles.



[View online >](#)

RefSeq:	NP_060764
Locus ID:	55280
UniProt ID:	Q69YN2 , A0A0S2Z5E9
RefSeq Size:	2633
Cytogenetics:	10q24.31
RefSeq ORF:	1614
Synonyms:	C19L1; hDrn1; SCAR17
Summary:	This gene encodes a member of the CWF19 protein family. Mutations in this gene have been associated with autosomal recessive spinocerebellar ataxia-17 and mild cognitive disability. Alternative splicing results in multiple transcript variants. [provided by RefSeq, Dec 2014]

Product images:



Coomassie blue staining of purified CWF19L1 protein (Cat# [TP300110]). The protein was produced from HEK293T cells transfected with CWF19L1 cDNA clone (Cat# [RC200110]) using MegaTran 2.0 (Cat# [TT210002]).