

Product datasheet for TP300106M

Bif (SH3GLB1) (NM_016009) Human Recombinant Protein

Product data:

Product Type:	Recombinant Proteins
Description:	Recombinant protein of human SH3-domain GRB2-like endophilin B1 (SH3GLB1), 100 µg
Species:	Human
Expression Host:	HEK293T
Expression cDNA Clone or AA Sequence:	>RC200106 protein sequence Red =Cloning site Green =Tags(s)
	MNIMDFNVKLAADAGTFLSRAVQFTEEKLGQAECTELDAHLENLLSKAECTKIWTEKIMKQTEVLLQPN PNARIEEFVYEKLDKAPSRINNPELLGQYMIDAGTEFGPGTAYGNALIKCGETQKRIGTADRELIQ TSA LNFLTPLRNFIEGDYKTIAKERKLLQNKRLDLDAKTRLKKAKAAETRSSEQLRITQSEFDRQAEITR LLEGISSTHAHHLRCLNDFVEAQMTYYAQCYQYMLDLQKQLGSPSNYLSNNNQTSVTPVPSVLPNAIG SSAMASTSGLVITSPSNLSDLKECSGSRKARVLYDYDAANSTELSLLADEVITVFSVVGMDSDWLMGERG NQKKGVPITYLELLN
	TR TRPLEQKLISEEDLAANDILDYKDDDDKV
Tag:	C-Myc/DDK
Predicted MW:	40.6 kDa
Concentration:	>0.05 µg/µL as determined by microplate BCA method
Purity:	> 80% as determined by SDS-PAGE and Coomassie blue staining
Buffer:	25 mM Tris-HCl, 100 mM glycine, pH 7.3, 10% glycerol
Preparation:	Recombinant protein was captured through anti-DDK affinity column followed by conventional chromatography steps.
Note:	For testing in cell culture applications, please filter before use. Note that you may experience some loss of protein during the filtration process.
Storage:	Store at -80°C.
Stability:	Stable for 12 months from the date of receipt of the product under proper storage and handling conditions. Avoid repeated freeze-thaw cycles.
RefSeq:	NP_057093
Locus ID:	51100



[View online »](#)

UniProt ID: [Q9Y371](#), [A0A140VJU5](#)

RefSeq Size: 6382

Cytogenetics: 1p22.3

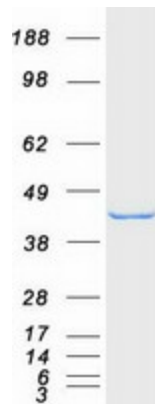
RefSeq ORF: 1095

Synonyms: Bif-1; CGI-61; dj612B15.2; PPP1R70

Summary: This gene encodes a SRC homology 3 domain-containing protein. The encoded protein interacts with the proapoptotic member of the Bcl-2 family, Bcl-2-associated X protein (Bax) and may be involved in regulating apoptotic signaling pathways. This protein may also be involved in maintaining mitochondrial morphology. Alternate splicing results in multiple transcript variants. [provided by RefSeq, Sep 2011]

Protein Pathways: Endocytosis

Product images:



Coomassie blue staining of purified SH3GLB1 protein (Cat# [TP300106]). The protein was produced from HEK293T cells transfected with SH3GLB1 cDNA clone (Cat# [RC200106]) using MegaTran 2.0 (Cat# [TT210002]).