

Product datasheet for **TP300105**

TRUB2 (NM_015679) Human Recombinant Protein

Product data:

Product Type:	Recombinant Proteins
Description:	Recombinant protein of human TruB pseudouridine (psi) synthase homolog 2 (E. coli) (TRUB2), 20 µg
Species:	Human
Expression Host:	HEK293T
Expression cDNA Clone or AA Sequence:	>RC200105 protein sequence Red =Cloning site Green =Tags(s)

MGSAGLSRLHGLFAVYKPPGLKWKHLRDTVELQLLKGLNARKPPAPKQVRVFLGPMEGSEEKELTLTAT
SVPSFINHPLVCGPAFAHLKVGVGHRDLDAQASGVLVLGVGHGCRLLTDMYNAHLTKDYTVRGLLGKATDD
FREDGRLVEKTTYDHTREKLDRLAVIQGSHQKALVMYSNLDLKTQEAYEMAVRGLIRPMNKSPMLITG
IRCLYFAPPEFLLEVQCMHETQKELRKLVEIGLELKTAVCTQVRRTDGFFTLDSALLRTQWDLTNIQ
DAIRAATPQVAAELEKSLSPGLDTKQLPSPGWSWDSQGPSSTLGLERGAGQ

TRTRPLEQKLISEEDLAANDILDYKDDDDKV

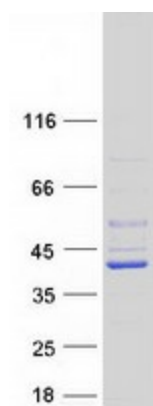
Tag:	C-Myc/DDK
Predicted MW:	36.5 kDa
Concentration:	>0.05 µg/µL as determined by microplate BCA method
Purity:	> 80% as determined by SDS-PAGE and Coomassie blue staining
Buffer:	25 mM Tris-HCl, 100 mM glycine, pH 7.3, 10% glycerol
Preparation:	Recombinant protein was captured through anti-DDK affinity column followed by conventional chromatography steps.
Note:	For testing in cell culture applications, please filter before use. Note that you may experience some loss of protein during the filtration process.
Storage:	Store at -80°C.
Stability:	Stable for 12 months from the date of receipt of the product under proper storage and handling conditions. Avoid repeated freeze-thaw cycles.
RefSeq:	NP_056494
Locus ID:	26995



[View online »](#)

UniProt ID:	<u>O95900</u> , <u>A0A024R886</u>
RefSeq Size:	1439
Cytogenetics:	9q34.11
RefSeq ORF:	993
Synonyms:	CLONE24922
Summary:	Pseudouridine is an abundant component of rRNAs and tRNAs and is enzymatically generated by isomerization of uridine by pseudouridine synthase (Zucchini et al., 2003 [PubMed 12736709]).[supplied by OMIM, Mar 2008]

Product images:



Coomassie blue staining of purified TRUB2 protein (Cat# TP300105). The protein was produced from HEK293T cells transfected with TRUB2 cDNA clone (Cat# [RC200105]) using MegaTran 2.0 (Cat# [TT210002]).