

Product datasheet for **TP300102M**

NTAL (LAT2) (NM_032463) Human Recombinant Protein

Product data:

Product Type:	Recombinant Proteins
Description:	Recombinant protein of human linker for activation of T cells family, member 2 (LAT2), transcript variant 2, 100 µg
Species:	Human
Expression Host:	HEK293T
Expression cDNA Clone or AA Sequence:	>RC200102 protein sequence Red =Cloning site Green =Tags(s)
	<p>MSSGTELLWPGAALLVLLGVAASLCVRCSPGAKRSEKIYQQRSLREDQQSFTGSRTYSLVGQAWPGPLA DMAPTRKDKLLQFYPSLEDPASSRYQNFSGSRHGSEEAYIDPIAMEYYNWGRFSKPPEDDDANSYENVL ICKKQTTETGAQQEGIGGLCRGDLSSLALKTGPTSGLCPSASPEEDEESEDYQNSASIHQWRESRKVMG QLQREASPGPVGSPDEEDGEPDYVNGEVAATEA</p> <p>TRTRPLEQKLISEEDLAANDILDYKDDDDKV</p>
Tag:	C-Myc/DDK
Predicted MW:	26.4 kDa
Concentration:	>0.05 µg/µL as determined by microplate BCA method
Purity:	> 80% as determined by SDS-PAGE and Coomassie blue staining
Buffer:	25 mM Tris-HCl, 100 mM glycine, pH 7.3, 10% glycerol
Preparation:	Recombinant protein was captured through anti-DDK affinity column followed by conventional chromatography steps.
Note:	For testing in cell culture applications, please filter before use. Note that you may experience some loss of protein during the filtration process.
Storage:	Store at -80°C.
Stability:	Stable for 12 months from the date of receipt of the product under proper storage and handling conditions. Avoid repeated freeze-thaw cycles.
RefSeq:	<u>NP_115852</u>
Locus ID:	7462



[View online »](#)

UniProt ID: [Q9GZY6](#)

RefSeq Size: 2129

Cytogenetics: 7q11.23

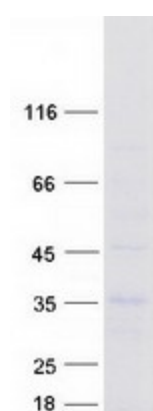
RefSeq ORF: 729

Synonyms: HSPC046; LAB; NTAL; WBSCR5; WBSCR15; WSCR5

Summary: This gene is one of the contiguous genes at 7q11.23 commonly deleted in Williams syndrome, a multisystem developmental disorder. This gene consists of at least 14 exons, and its alternative splicing generates 3 transcript variants, all encoding the same protein. [provided by RefSeq, Jul 2008]

Protein Families: Transmembrane

Product images:



Coomassie blue staining of purified LAT2 protein (Cat# [TP300102]). The protein was produced from HEK293T cells transfected with LAT2 cDNA clone (Cat# [RC200102]) using MegaTran 2.0 (Cat# [TT210002]).