

## Product datasheet for **TP300102L**

### NTAL (LAT2) (NM\_032463) Human Recombinant Protein

#### Product data:

**Product Type:** Recombinant Proteins

**Description:** Recombinant protein of human linker for activation of T cells family, member 2 (LAT2), transcript variant 2, 1 mg

**Species:** Human

**Expression Host:** HEK293T

**Expression cDNA Clone or AA Sequence:** >RC200102 protein sequence  
**Red**=Cloning site **Green**=Tags(s)

MSSGTELLWPGAALLVLLGVAASLCVRCSPGAKRSEKIYQQRSLREDQQSFTGSRTYSLVGQAWPGPLA  
DMAPTRKDKLLQFYPSLEDPASSRYQNFSGSRHGSEEAYIDPIAMEYYNWGRFSKPPEDDDANSYENVL  
ICKKQTTETGAQQEGIGGLCRGDLSSLALKTGPTSGLCPSASPEEDEESEDYQNSASIHQWRESRKVMG  
QLQREASPGPVGSPDEEDGEPDYVNGEVAATEA

**TRTRPLEQKLISEEDLAANDILDYKDDDDKV**

**Tag:** C-Myc/DDK

**Predicted MW:** 26.4 kDa

**Concentration:** >0.05 µg/µL as determined by microplate BCA method

**Purity:** > 80% as determined by SDS-PAGE and Coomassie blue staining

**Buffer:** 25 mM Tris-HCl, 100 mM glycine, pH 7.3, 10% glycerol

**Preparation:** Recombinant protein was captured through anti-DDK affinity column followed by conventional chromatography steps.

**Note:** For testing in cell culture applications, please filter before use. Note that you may experience some loss of protein during the filtration process.

**Storage:** Store at -80°C.

**Stability:** Stable for 12 months from the date of receipt of the product under proper storage and handling conditions. Avoid repeated freeze-thaw cycles.

**RefSeq:** [NP\\_115852](#)

**Locus ID:** 7462



[View online »](#)

UniProt ID: [Q9GZY6](#)

RefSeq Size: 2129

Cytogenetics: 7q11.23

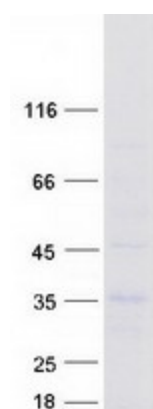
RefSeq ORF: 729

Synonyms: HSPC046; LAB; NTAL; WBSCR5; WBSCR15; WSCR5

**Summary:** This gene is one of the contiguous genes at 7q11.23 commonly deleted in Williams syndrome, a multisystem developmental disorder. This gene consists of at least 14 exons, and its alternative splicing generates 3 transcript variants, all encoding the same protein. [provided by RefSeq, Jul 2008]

**Protein Families:** Transmembrane

### Product images:



Coomassie blue staining of purified LAT2 protein (Cat# [TP300102]). The protein was produced from HEK293T cells transfected with LAT2 cDNA clone (Cat# [RC200102]) using MegaTran 2.0 (Cat# [TT210002]).