

## Product datasheet for **TP300097M**

### Apc11 (ANAPC11) (NM\_001002244) Human Recombinant Protein

#### Product data:

Product Type:	Recombinant Proteins
Description:	Recombinant protein of human anaphase promoting complex subunit 11 (ANAPC11), transcript variant 1, 100 µg
Species:	Human
Expression Host:	HEK293T
Expression cDNA	>RC200097 protein sequence
Clone or AA Sequence:	Red=Cloning site Green=Tags(s)

MKVKIKCWNGVATWLWVANDENCGICRMAFNGCCPDCPLHGESISRCLGWCPQPVPVLGGRAHPQVPINT  
ASPTPGQHTGSLMSREESSRSPDPTPPALDQETSSLLRCTSPWCLDHSCDLFGITDQVSADGPRACRQGA  
RRRLPAGVGPVLPPLPHALHPQVAARTAGAAALPHVPPGMEVQGVRPDLALAGGAS

TRTRPLEQKLISEEDLAANDILDYKDDDDKV

Tag:	C-Myc/DDK
Predicted MW:	20.5 kDa
Concentration:	>0.05 µg/µL as determined by microplate BCA method
Purity:	> 80% as determined by SDS-PAGE and Coomassie blue staining
Buffer:	25 mM Tris-HCl, 100 mM glycine, pH 7.3, 10% glycerol
Preparation:	Recombinant protein was captured through anti-DDK affinity column followed by conventional chromatography steps.
Note:	For testing in cell culture applications, please filter before use. Note that you may experience some loss of protein during the filtration process.
Storage:	Store at -80°C.
Stability:	Stable for 12 months from the date of receipt of the product under proper storage and handling conditions. Avoid repeated freeze-thaw cycles.
RefSeq:	<a href="#">NP_001002244</a>
Locus ID:	51529
UniProt ID:	<a href="#">Q9NYG5</a> , <a href="#">A0A024R8S1</a>



[View online »](#)

RefSeq Size: 1186

Cytogenetics: 17q25.3

RefSeq ORF: 588

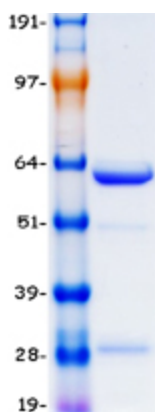
Synonyms: APC11; Apc11p; HSPC214

**Summary:** Together with the cullin protein ANAPC2, constitutes the catalytic component of the anaphase promoting complex/cyclosome (APC/C), a cell cycle-regulated E3 ubiquitin ligase that controls progression through mitosis and the G1 phase of the cell cycle. The APC/C complex acts by mediating ubiquitination and subsequent degradation of target proteins: it mainly mediates the formation of 'Lys-11'-linked polyubiquitin chains and, to a lower extent, the formation of 'Lys-48'- and 'Lys-63'-linked polyubiquitin chains. May recruit the E2 ubiquitin-conjugating enzymes to the complex.[UniProtKB/Swiss-Prot Function]

**Protein Families:** Druggable Genome

**Protein Pathways:** Cell cycle, Oocyte meiosis, Progesterone-mediated oocyte maturation, Ubiquitin mediated proteolysis

### Product images:



Coomassie blue staining of purified ANAPC11 protein (Cat# [TP300097]). The protein was produced from HEK293T cells transfected with ANAPC11 cDNA clone (Cat# [RC200097]) using MegaTran 2.0 (Cat# [TT210002]).