

## Product datasheet for **TP300086M**

### **GOLPH2 (GOLM1) (NM\_177937) Human Recombinant Protein**

#### Product data:

Product Type:	Recombinant Proteins
Description:	Recombinant protein of human golgi membrane protein 1 (GOLM1), transcript variant 2, 100 µg
Species:	Human
Expression Host:	HEK293T
Expression cDNA Clone or AA Sequence:	>RC200086 protein sequence <b>Red</b> =Cloning site <b>Green</b> =Tags(s)
	MGLGNGRRSMKSPPLVLAALVACIIVLGFNYWIASRSVDLQTRIMELEGRVRRAAAERGAVELKKNEFQ GELEKQREQLDKIQSSHNFLQESVNKLYQDEKAVLVNNTTGERLIRVLQDQLKTLQRNYGRLQQDVLQF QKNQTNLERKFSYDLSQCINQMKEVKEQCEERIEEVTKKGNEAVASRDLSENNDRQQLQALSEPQPRLQ AAGLPHTEVPPQGKGNVLGNSKSQTPAPSSSEVLDKSRQVEKEETNEIQVNEEPQRDRLPQEPGREQVVE DRPVGGRGFGGAGELGQTPQVQAALSVSQENPEMEGPERDQLVIPDGQEEEQEAAGEGRNQKLRGEDDY NMDENEAESETDKQAALAGNDRNIDVFNVEDQKRDTINLLDQREKRNHTL
	<b>TRTRPLEQKLISEEDLAANDILDYKDDDDKV</b>
Tag:	C-Myc/DDK
Predicted MW:	45.2 kDa
Concentration:	>0.05 µg/µL as determined by microplate BCA method
Purity:	> 80% as determined by SDS-PAGE and Coomassie blue staining
Buffer:	25 mM Tris-HCl, 100 mM glycine, pH 7.3, 10% glycerol
Preparation:	Recombinant protein was captured through anti-DDK affinity column followed by conventional chromatography steps.
Note:	For testing in cell culture applications, please filter before use. Note that you may experience some loss of protein during the filtration process.
Storage:	Store at -80°C.
Stability:	Stable for 12 months from the date of receipt of the product under proper storage and handling conditions. Avoid repeated freeze-thaw cycles.
RefSeq:	<u><a href="#">NP_808800</a></u>
Locus ID:	51280



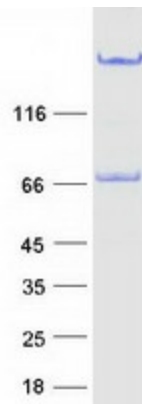
[View online »](#)

UniProt ID: [Q8NBJ4](#), [B3KNK9](#)  
RefSeq Size: 3092  
Cytogenetics: 9q21.33  
RefSeq ORF: 1200  
Synonyms: bA379P1.3; C9orf155; GOLPH2; GP73; HEL46; PSEC0257

**Summary:** The Golgi complex plays a key role in the sorting and modification of proteins exported from the endoplasmic reticulum. The protein encoded by this gene is a type II Golgi transmembrane protein. It processes proteins synthesized in the rough endoplasmic reticulum and assists in the transport of protein cargo through the Golgi apparatus. The expression of this gene has been observed to be upregulated in response to viral infection. Alternatively spliced transcript variants encoding the same protein have been described for this gene. [provided by RefSeq, Sep 2009]

**Protein Families:** Transmembrane

### Product images:



Coomassie blue staining of purified GOLM1 protein (Cat# [TP300086]). The protein was produced from HEK293T cells transfected with GOLM1 cDNA clone (Cat# [RC200086]) using MegaTran 2.0 (Cat# [TT210002]).