

Product datasheet for **TP300062M**

LMCD1 (NM_014583) Human Recombinant Protein

Product data:

Product Type: Recombinant Proteins

Description: Recombinant protein of human LIM and cysteine-rich domains 1 (LMCD1), 100 µg

Species: Human

Expression Host: HEK293T

**Expression cDNA Clone
or AA Sequence:** >RC200062 protein sequence
Red=Cloning site **Green**=Tags(s)

MAKVAKDLNPGVKKMSLGQLQSARGVACLGCKGTCSEFPHSWRKICKSCKCSQEDHCLTSDLEDDRKIG
RLLMDSKYSTLTARVKGDDGIRIYKRNRMIMTNPIATGKDPTFDITYEWAPPGVTQKLGQYMEIPKE
KQPVTGTEGAFYRRRQLMHQLPIYDQDPSRCRGLLENELKLMEEFVKQYKSEALGVGEVALPGQGGLPKE
EGKQKEKPEGAETTAATTNGSLSDPSKEVEYVCELCKGAAPPDPSVVYSDRAGYNKQWHPTCFVCAKCE
PLVDLIYFWKDGAPWCGRHYCESLRPRCSGCDEIIFAEDYQRVEDLAWHRKHFVCEGCEQLLSGRAYIVT
KGQLLCPTCSKSKRS

TRTRPLEQKLISEEDLAANDILDYKDDDDKV

Tag: C-Myc/DDK

Predicted MW: 40.7 kDa

Concentration: >0.05 µg/µL as determined by microplate BCA method

Purity: > 80% as determined by SDS-PAGE and Coomassie blue staining

Buffer: 25 mM Tris-HCl, 100 mM glycine, pH 7.3, 10% glycerol

Preparation: Recombinant protein was captured through anti-DDK affinity column followed by conventional chromatography steps.

Note: For testing in cell culture applications, please filter before use. Note that you may experience some loss of protein during the filtration process.

Storage: Store at -80°C.

Stability: Stable for 12 months from the date of receipt of the product under proper storage and handling conditions. Avoid repeated freeze-thaw cycles.

RefSeq: [NP_055398](#)

Locus ID: 29995

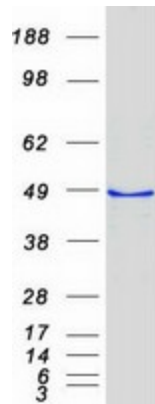


[View online »](#)

UniProt ID: [Q9NZU5](#)
RefSeq Size: 1757
Cytogenetics: 3p25.3
RefSeq ORF: 1095

Summary: This gene encodes a member of the LIM-domain family of zinc finger proteins. The encoded protein contains an N-terminal cysteine-rich domain and two C-terminal LIM domains. The presence of LIM domains suggests involvement in protein-protein interactions. The protein may act as a co-regulator of transcription along with other transcription factors. Alternate splicing results in multiple transcript variants of this gene. [provided by RefSeq, May 2013]

Product images:



Coomassie blue staining of purified LMCD1 protein (Cat# [TP300062]). The protein was produced from HEK293T cells transfected with LMCD1 cDNA clone (Cat# [RC200062]) using MegaTran 2.0 (Cat# [TT210002]).