

Product datasheet for **TP300062L**

LMCD1 (NM_014583) Human Recombinant Protein

Product data:

Product Type:	Recombinant Proteins
Description:	Recombinant protein of human LIM and cysteine-rich domains 1 (LMCD1), 1 mg
Species:	Human
Expression Host:	HEK293T
Expression cDNA Clone or AA Sequence:	>RC200062 protein sequence Red =Cloning site Green =Tags(s)

MAKVAKDLNPGVKKMSLGLQSQARGVACLGCKGTCSEFPHSWRKICKSCKCSQEDHCLTSDLEDDRKIG
 RLLMDSKYSTLTARVKGDDGIRIYKRNRMIMTNPIATGKDPTFDITYEWAPPGVTQKLGQYMEIPKE
 KQPVTGTEGAFYRRRQLMHQLPIYDQDPSRCRGLLENELKLMEEFVKQYKSEALGVGEVALPGQGGLPKE
 EGKQKEKPEGAETTAATTNGSLSDPSKEVEYVCELCKGAAPPDPSVVYSDRAGYNKQWHPTCFVCAKCE
 PLVDLIYFKWDGAPWCGRHYCESLRPRCSGCDEIIFAEDYQRVEDLAWHRKHVCEGCEQLLSGRAYIVT
 KGQLLCPTCSKSKRS

TRTRPLEQKLISEEDLAANDILDYKDDDDKV

Tag:	C-Myc/DDK
Predicted MW:	40.7 kDa
Concentration:	>0.05 µg/µL as determined by microplate BCA method
Purity:	> 80% as determined by SDS-PAGE and Coomassie blue staining
Buffer:	25 mM Tris-HCl, 100 mM glycine, pH 7.3, 10% glycerol
Preparation:	Recombinant protein was captured through anti-DDK affinity column followed by conventional chromatography steps.
Note:	For testing in cell culture applications, please filter before use. Note that you may experience some loss of protein during the filtration process.
Storage:	Store at -80°C.
Stability:	Stable for 12 months from the date of receipt of the product under proper storage and handling conditions. Avoid repeated freeze-thaw cycles.
RefSeq:	NP_055398
Locus ID:	29995



[View online »](#)

UniProt ID: [Q9NZU5](#)

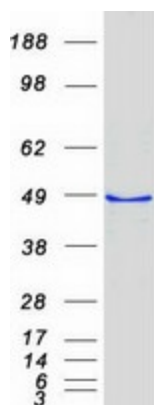
RefSeq Size: 1757

Cytogenetics: 3p25.3

RefSeq ORF: 1095

Summary: This gene encodes a member of the LIM-domain family of zinc finger proteins. The encoded protein contains an N-terminal cysteine-rich domain and two C-terminal LIM domains. The presence of LIM domains suggests involvement in protein-protein interactions. The protein may act as a co-regulator of transcription along with other transcription factors. Alternate splicing results in multiple transcript variants of this gene. [provided by RefSeq, May 2013]

Product images:



Coomassie blue staining of purified LMCD1 protein (Cat# [TP300062]). The protein was produced from HEK293T cells transfected with LMCD1 cDNA clone (Cat# [RC200062]) using MegaTran 2.0 (Cat# [TT210002]).