

Product datasheet for **TP300056**

PPP2R1A (NM_014225) Human Recombinant Protein

Product data:

Product Type:	Recombinant Proteins
Description:	Recombinant protein of human protein phosphatase 2 (formerly 2A), regulatory subunit A, alpha isoform (PPP2R1A)
Species:	Human
Expression Host:	HEK293T
Tag:	C-Myc/DDK
Predicted MW:	65.1 kDa
Concentration:	>50 ug/mL as determined by microplate BCA method
Purity:	> 80% as determined by SDS-PAGE and Coomassie blue staining
Buffer:	25 mM Tris.HCl, pH 7.3, 100 mM glycine, 10% glycerol
Preparation:	Recombinant protein was captured through anti-DDK affinity column followed by conventional chromatography steps.
Storage:	Store at -80°C.
Stability:	Stable for 12 months from the date of receipt of the product under proper storage and handling conditions. Avoid repeated freeze-thaw cycles.
RefSeq:	NP_055040
Locus ID:	5518
RefSeq Size:	2519
Cytogenetics:	19q13.41
RefSeq ORF:	1767
Synonyms:	MRD36; PP2A-Aalpha; PP2AA; PP2AAALPHA; PR65A



[View online »](#)

Summary:

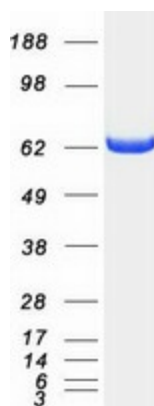
This gene encodes a constant regulatory subunit of protein phosphatase 2. Protein phosphatase 2 is one of the four major Ser/Thr phosphatases, and it is implicated in the negative control of cell growth and division. It consists of a common heteromeric core enzyme, which is composed of a catalytic subunit and a constant regulatory subunit, that associates with a variety of regulatory subunits. The constant regulatory subunit A serves as a scaffolding molecule to coordinate the assembly of the catalytic subunit and a variable regulatory B subunit. This gene encodes an alpha isoform of the constant regulatory subunit A. Alternatively spliced transcript variants have been described. [provided by RefSeq, Apr 2010]

Protein Families:

Druggable Genome, Phosphatase, Transcription Factors

Protein Pathways:

Long-term depression, Oocyte meiosis, TGF-beta signaling pathway, Tight junction, Wnt signaling pathway

Product images:

Coomassie blue staining of purified PPP2R1A protein (Cat# TP300056). The protein was produced from HEK293T cells transfected with PPP2R1A cDNA clone (Cat# [RC200056]) using MegaTran 2.0 (Cat# [TT210002]).