

Product datasheet for **TP300055**

METTL11A (NTMT1) (NM_014064) Human Recombinant Protein

Product data:

Product Type:	Recombinant Proteins
Description:	Recombinant protein of human methyltransferase like 11A (METTL11A), 20 µg
Species:	Human
Expression Host:	HEK293T
Expression cDNA Clone or AA Sequence:	>RC200055 protein sequence Red =Cloning site Green =Tags(s)
	MTSEVIEDEKQFYSAKTYWKQIPPTVDGMLGGYGHISIDINSSRKFLQRFLREGPNKTGTSCALDCGA GIGRITKRLLPLFREVDMDITEDFLVQAKTYLGEEGKRVRYFCCGLQDFTPEPDSYDVIWIQWVIGH LTDQHLEFLRRCKGSLRPNGIIVIKDNMAQEGVILDDVDSSVCRDLDVVRRICSAAGLSLLAEERQENL PDEIYHVYSFALR
	TRTRPLEQKLISEEDLAANDILDYKDDDDKV
Tag:	C-Myc/DDK
Predicted MW:	25.2 kDa
Concentration:	>0.05 µg/µL as determined by microplate BCA method
Purity:	> 80% as determined by SDS-PAGE and Coomassie blue staining
Buffer:	25 mM Tris-HCl, 100 mM glycine, pH 7.3, 10% glycerol
Preparation:	Recombinant protein was captured through anti-DDK affinity column followed by conventional chromatography steps.
Note:	For testing in cell culture applications, please filter before use. Note that you may experience some loss of protein during the filtration process.
Storage:	Store at -80°C.
Stability:	Stable for 12 months from the date of receipt of the product under proper storage and handling conditions. Avoid repeated freeze-thaw cycles.
RefSeq:	<u>NP_054783</u>
Locus ID:	28989
UniProt ID:	<u>Q9BV86</u> , <u>A0A024R8E4</u>



[View online »](#)

RefSeq Size: 1536

Cytogenetics: 9q34.11

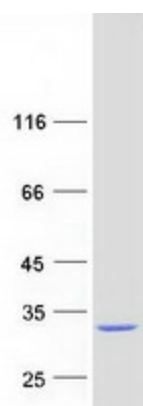
RefSeq ORF: 669

Synonyms: AD-003; C9orf32; HOMET1A; METTL11A; NRMT; NRMT1; NTM1A

Summary: The METTL11A gene encodes an N-terminal methyltransferase for the RAN (MIM 601179) guanine nucleotide exchange factor regulator of chromosome condensation 1 (RCC1; MIM 179710). METTL11A enzyme alpha-N-methylates other protein targets such as SET (MIM 600960) and RB (MIM 180200).[supplied by OMIM, Nov 2010]

Protein Families: Druggable Genome

Product images:



Coomassie blue staining of purified NTMT1 protein (Cat# TP300055). The protein was produced from HEK293T cells transfected with NTMT1 cDNA clone (Cat# [RC200055]) using MegaTran 2.0 (Cat# [TT210002]).