

Product datasheet for **TP300054M**

RPL36 (NM_015414) Human Recombinant Protein

Product data:

Product Type:	Recombinant Proteins
Description:	Recombinant protein of human ribosomal protein L36 (RPL36), transcript variant 2, 100 µg
Species:	Human
Expression Host:	HEK293T
Expression cDNA Clone or AA Sequence:	>RC200054 protein sequence Red =Cloning site Green =Tags(s) MALRYPMAVGLNKGHKVTKNVSKPRHSRRRGRLTKHTKFVRDMIREVCGFAPYERRAMELLKVSCKRAL KFIKKRVGTHIRAKRKREELSNVLAAMRKAANKD TRTRPLEQKLISEEDLAANDILDYKDDDDKV
Tag:	C-Myc/DDK
Predicted MW:	12.1 kDa
Concentration:	>0.05 µg/µL as determined by microplate BCA method
Purity:	> 80% as determined by SDS-PAGE and Coomassie blue staining
Buffer:	25 mM Tris-HCl, 100 mM glycine, pH 7.3, 10% glycerol
Preparation:	Recombinant protein was captured through anti-DDK affinity column followed by conventional chromatography steps.
Note:	For testing in cell culture applications, please filter before use. Note that you may experience some loss of protein during the filtration process.
Storage:	Store at -80°C.
Stability:	Stable for 12 months from the date of receipt of the product under proper storage and handling conditions. Avoid repeated freeze-thaw cycles.
RefSeq:	NP_056229
Locus ID:	25873
UniProt ID:	Q9Y3U8
RefSeq Size:	557
Cytogenetics:	19p13.3



[View online »](#)

RefSeq ORF: 315

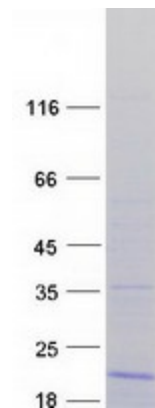
Synonyms: L36

Summary: Ribosomes, the organelles that catalyze protein synthesis, consist of a small 40S subunit and a large 60S subunit. Together these subunits are composed of 4 RNA species and approximately 80 structurally distinct proteins. This gene encodes a ribosomal protein that is a component of the 60S subunit. The protein belongs to the L36E family of ribosomal proteins. It is located in the cytoplasm. Transcript variants derived from alternative splicing exist; they encode the same protein. As is typical for genes encoding ribosomal proteins, there are multiple processed pseudogenes of this gene dispersed through the genome. [provided by RefSeq, Jul 2008]

Protein Families: Druggable Genome

Protein Pathways: Ribosome

Product images:



Coomassie blue staining of purified RPL36 protein (Cat# [TP300054]). The protein was produced from HEK293T cells transfected with RPL36 cDNA clone (Cat# [RC200054]) using MegaTran 2.0 (Cat# [TT210002]).