

Product datasheet for **TP300052L**

MRPL18 (NM_014161) Human Recombinant Protein

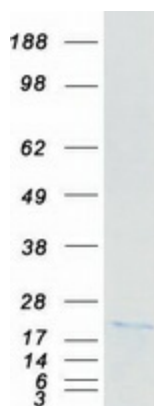
Product data:

Product Type:	Recombinant Proteins
Description:	Recombinant protein of human mitochondrial ribosomal protein L18 (MRPL18), nuclear gene encoding mitochondrial protein, 1 mg
Species:	Human
Expression Host:	HEK293T
Expression cDNA Clone or AA Sequence:	>RC200052 protein sequence Red =Cloning site Green =Tags(s)
	<p>MALRSRFWGLFSVCRNPGCRFAALSTSSEPAAKPEVDPVENEAVAPEFTNRNPNRNLLELLSVARKERGWRT VFPSREFWHRLRVIRTQHHVEALVEHQNGKVVSASTREWAIAKKHLYSTRNVVACESIGRVLAQRCLEAG INFMVYQPTPWEAASDSMKRLQSAMTEGGVVLREPQRIYE</p> <p>TRTRPLEQKLISEEDLAANDILDYKDDDDKV</p>
Tag:	C-Myc/DDK
Predicted MW:	20.4 kDa
Concentration:	>0.05 µg/µL as determined by microplate BCA method
Purity:	> 80% as determined by SDS-PAGE and Coomassie blue staining
Buffer:	25 mM Tris-HCl, 100 mM glycine, pH 7.3, 10% glycerol
Preparation:	Recombinant protein was captured through anti-DDK affinity column followed by conventional chromatography steps.
Note:	For testing in cell culture applications, please filter before use. Note that you may experience some loss of protein during the filtration process.
Storage:	Store at -80°C.
Stability:	Stable for 12 months from the date of receipt of the product under proper storage and handling conditions. Avoid repeated freeze-thaw cycles.
RefSeq:	<u>NP_054880</u>
Locus ID:	29074
UniProt ID:	<u>Q9H0U6</u>


[View online »](#)

RefSeq Size:	994
Cytogenetics:	6q25.3
RefSeq ORF:	540
Synonyms:	HSPC071; L18mt; MRP-L18
Summary:	This nuclear gene encodes a protein component of the larger 39S subunit of mitochondrial ribosome. This protein may also aid in the import of nuclear-encoded 5S rRNA into mitochondria. Alternative splicing results in multiple transcript variants, most of which are not predicted to encode a protein. A pseudogene of this gene is found on chromosome 16. [provided by RefSeq, Jan 2016]

Product images:



Coomassie blue staining of purified MRPL18 protein (Cat# [TP300052]). The protein was produced from HEK293T cells transfected with MRPL18 cDNA clone (Cat# [RC200052]) using MegaTran 2.0 (Cat# [TT210002]).