

## Product datasheet for **TP300049M**

### TMEM208 (NM\_014187) Human Recombinant Protein

#### Product data:

**Product Type:** Recombinant Proteins

**Description:** Recombinant protein of human transmembrane protein 208 (TMEM208), 100 µg

**Species:** Human

**Expression Host:** HEK293T

**Expression cDNA Clone or AA Sequence:** >RC200049 protein sequence

**Red**=Cloning site **Green**=Tags(s)

MAPKGVGTRGKKQIFEENRETLKFYLRILGANAIYCLVTLVFFYSSASFWAWLALGFSLAVYGASYHS  
MSSMARAAFSEDGALMDGGMDLNMEQGMAEHLKDVILLTAIVQVLSCFSLYVWSFWLLAPGRALYLLWVN  
VLGPWFTADSGTPAPEHNEKRQRRQERRQMKRL

**TRTRPLEQKLISEEDLAANDILDYKDDDDKV**

**Tag:** C-Myc/DDK

**Predicted MW:** 19.5 kDa

**Concentration:** >0.05 µg/µL as determined by microplate BCA method

**Purity:** > 80% as determined by SDS-PAGE and Coomassie blue staining

**Buffer:** 25 mM Tris-HCl, 100 mM glycine, pH 7.3, 10% glycerol

**Preparation:** Recombinant protein was captured through anti-DDK affinity column followed by conventional chromatography steps.

**Note:** For testing in cell culture applications, please filter before use. Note that you may experience some loss of protein during the filtration process.

**Storage:** Store at -80°C.

**Stability:** Stable for 12 months from the date of receipt of the product under proper storage and handling conditions. Avoid repeated freeze-thaw cycles.

**RefSeq:** [NP\\_054906](#)

**Locus ID:** 29100

**UniProt ID:** [Q9BTX3](#)

**RefSeq Size:** 808



[View online »](#)

Cytogenetics: 16q22.1

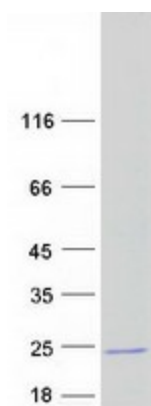
RefSeq ORF: 519

Synonyms: hSND2; HSPC171

**Summary:** This gene encodes a highly conserved protein which is localized in the endoplasmic reticulum (ER). The protein is linked to autophagy and ER stress. Knockdown of this gene increased autophagy and triggered ER stress. Alternative splicing results in multiple transcript variants. [provided by RefSeq, Dec 2015]

**Protein Families:** Transmembrane

### Product images:



Coomassie blue staining of purified TMEM208 protein (Cat# [TP300049]). The protein was produced from HEK293T cells transfected with TMEM208 cDNA clone (Cat# [RC200049]) using MegaTran 2.0 (Cat# [TT210002]).