

Product datasheet for **TP300043**

NUPL1 (NUP58) (NM_014089) Human Recombinant Protein

Product data:

Product Type: Recombinant Proteins
Description: Recombinant protein of human nucleoporin like 1 (NUPL1), transcript variant 1, 20 µg
Species: Human
Expression Host: HEK293T
Expression cDNA Clone or AA Sequence: >RC200043 protein sequence
Red=Cloning site **Green**=Tags(s)

MSTGFSFGSGTLGSTTVAAGGTSTGGVFSFGTGASSNPSVGLNFGNLGSTSTPATTAPSSSGFGTGLFGS
KPATGFTLGGTNTGIATTITTLGTLGTPATTAATTGFSLGFNKPAASATPFALPITSTSASGLTLSSAL
TSTPAASTGFTLNNLGTTATTTASTGLSLGGALAGLGGSLFQSTNTGTSGLGQNALGLTLGTTAATST
AGNEGLGGIDFSSSSDKKSDKTGRPEDSKALKDENLPPVICQDVENLQKFVKEQKQVQEEISRMSKAM
LKVQEDIKALKQLLSLAANGIQRNTLNIDKLIETAQELKNAEIALRTQKTPPGLQHEYAAPADYFRILV
QQFEVQLQQYRQQIELENHLATQANNSHITPDLSMAMQKIYQTFVALAAQLQSIHENVKVLKEQYLG
RKMFLGDAVDVFETRRAEAKKWQNTPRVTTGTPFSTMPNAAVAMAATLTQQQPATGPPSLGVFSFGT
PFGSGIGTGLQSSGLGSSNLGGFGTSSGFGCSTTGASTFGFGTTNKPSGSLAGFGSSSTSGFNFSNPGI
TASAGLTFGVSNPASAGFGTGGQLLQKKPPAGNKRGR

TRTRPLEQKLISEEDLAANDILDYKDDDDKV

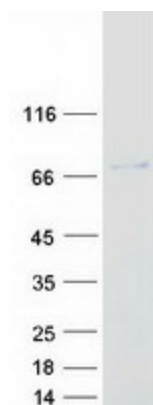
Tag: C-Myc/DDK
Predicted MW: 60.7 kDa
Concentration: >0.05 µg/µL as determined by microplate BCA method
Purity: > 80% as determined by SDS-PAGE and Coomassie blue staining
Buffer: 25 mM Tris-HCl, 100 mM glycine, pH 7.3, 10% glycerol
Preparation: Recombinant protein was captured through anti-DDK affinity column followed by conventional chromatography steps.
Note: For testing in cell culture applications, please filter before use. Note that you may experience some loss of protein during the filtration process.
Storage: Store at -80°C.



[View online »](#)

Stability:	Stable for 12 months from the date of receipt of the product under proper storage and handling conditions. Avoid repeated freeze-thaw cycles.
RefSeq:	NP_054808
Locus ID:	9818
UniProt ID:	Q9BVL2
RefSeq Size:	4335
Cytogenetics:	13q12.13
RefSeq ORF:	1797
Synonyms:	NUP45; NUPL1; PRO2463
Summary:	This gene encodes a member of the nucleoporin family that shares 87% sequence identity with rat nucleoporin p58. The protein is localized to the nuclear rim and is a component of the nuclear pore complex (NPC). All molecules entering or leaving the nucleus either diffuse through or are actively transported by the NPC. Alternate transcriptional splice variants, encoding different isoforms, have been characterized. [provided by RefSeq, Jul 2008]

Product images:



Coomassie blue staining of purified NUP58 protein (Cat# TP300043). The protein was produced from HEK293T cells transfected with NUP58 cDNA clone (Cat# [RC200043]) using MegaTran 2.0 (Cat# [TT210002]).