

Product datasheet for **TP300042M**

Bcl rambo (BCL2L13) (NM_015367) Human Recombinant Protein

Product data:

Product Type:	Recombinant Proteins
Description:	Recombinant protein of human BCL2-like 13 (apoptosis facilitator) (BCL2L13), nuclear gene encoding mitochondrial protein, 100 µg
Species:	Human
Expression Host:	HEK293T
Expression cDNA Clone or AA Sequence:	>RC200042 protein sequence Red =Cloning site Green =Tags(s)

MASSTVPLGFHYETKYVWLSYLGLLSQEKLQEQLHSSPQGVQLDIASQSLDQEILLKVKTEIEEELKSL
DKEISEAFTSTGFDRTHTSPVFSPANPESSMEDCLAHLGEKVSQELKEPLHKALQMLLSQPVTYQAFRECT
LETTVHASGWNKILVPLVLLRQMLLELTRRGQEPLSALLQFGVTYLEDYSAEYIIQQGGWGTVFSLESEE
EYYPGITAEDSNDIYILPSDNSGQVSPPESTVTTSWQSESLPVLSASQSWHTESLPVSLGPESWQQIA
MDPEEVKSLDSNGAGEKSENNSSNSDIVHVEKEEVPEGMEEAAVASVVLPALELQALPEAPAPLLPHIT
ATSLTGTRESDEVTVEKSSPATSLFVELDEEEVKAATTEPTEVEEVPALEPTETLLSEKEINAREES
LVEELSPASEKKPVPPSEGGKSRSLSPAGEMKPMPLSEGKSILLFGGAAAVAILAVAIGVALALRKK

TRTRPLEQKLISEEDLAANDILDYKDDDDKV

Tag:	C-Myc/DDK
Predicted MW:	52.5 kDa
Concentration:	>0.05 µg/µL as determined by microplate BCA method
Purity:	> 80% as determined by SDS-PAGE and Coomassie blue staining
Buffer:	25 mM Tris-HCl, 100 mM glycine, pH 7.3, 10% glycerol
Preparation:	Recombinant protein was captured through anti-DDK affinity column followed by conventional chromatography steps.
Note:	For testing in cell culture applications, please filter before use. Note that you may experience some loss of protein during the filtration process.
Storage:	Store at -80°C.
Stability:	Stable for 12 months from the date of receipt of the product under proper storage and handling conditions. Avoid repeated freeze-thaw cycles.



[View online »](#)

RefSeq: [NP_056182](#)

Locus ID: 23786

UniProt ID: [Q9BXK5](#)

RefSeq Size: 5132

Cytogenetics: 22q11.21

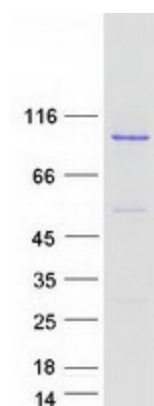
RefSeq ORF: 1455

Synonyms: BCL-RAMBO; Bcl2-L-13; MIL1

Summary: This gene encodes a mitochondrially-localized protein with conserved B-cell lymphoma 2 homology motifs. Overexpression of the encoded protein results in apoptosis. Alternatively spliced transcript variants have been observed for this gene. [provided by RefSeq, Jul 2012]

Protein Families: Druggable Genome, Transmembrane

Product images:



Coomassie blue staining of purified BCL2L13 protein (Cat# [TP300042]). The protein was produced from HEK293T cells transfected with BCL2L13 cDNA clone (Cat# [RC200042]) using MegaTran 2.0 (Cat# [TT210002]).