

## Product datasheet for **TP300042L**

### **Bcl rambo (BCL2L13) (NM\_015367) Human Recombinant Protein**

#### **Product data:**

<b>Product Type:</b>	Recombinant Proteins
<b>Description:</b>	Recombinant protein of human BCL2-like 13 (apoptosis facilitator) (BCL2L13), nuclear gene encoding mitochondrial protein, 1 mg
<b>Species:</b>	Human
<b>Expression Host:</b>	HEK293T
<b>Expression cDNA Clone or AA Sequence:</b>	>RC200042 protein sequence <b>Red</b> =Cloning site <b>Green</b> =Tags(s)

MASSTVPLGFHYETKYVWLSYLGLLSQEKLQEQLHSSPQGVQLDIASQSLDQEILLKVKTEIEEELKSL  
DKEISEAFTSTGFDRTHTSPVFSPANPESSMEDCLAHLGKVSQELKEPLHKALQMLLSQPVTYQAFRECT  
LETTVHASGWNKILVPLVLLRQMELLETRRGQEPLSALLQFGVTYLEDYSAEYIIQGGWGTVFSLESEE  
EEYPGITAEDSNDIYILPSDNSGQVSPPESTVTTWQSESLPVLSASQSWHTESLPVSLGPESWQQIA  
MDPEEVKSLDSNGAGEKSENNSSNSDIVHVEKEEVPEGMEEAAVASVVLPALELQALPEAPAPLLPHIT  
ATSLTGTRESDETVITVEKSSPATSLFVELDEEEVKAATTEPTEVEEVPALEPTETLLSEKEINAREES  
LVEELSPASEKKPVPPSEGKSRLSPAGEMKPMPLSEGKSILLFGGAAAVAILAVAIGVALALRRK

**TRTRPLEQKLISEEDLAANDILDYKDDDDKV**

<b>Tag:</b>	C-Myc/DDK
<b>Predicted MW:</b>	52.5 kDa
<b>Concentration:</b>	>0.05 µg/µL as determined by microplate BCA method
<b>Purity:</b>	> 80% as determined by SDS-PAGE and Coomassie blue staining
<b>Buffer:</b>	25 mM Tris-HCl, 100 mM glycine, pH 7.3, 10% glycerol
<b>Preparation:</b>	Recombinant protein was captured through anti-DDK affinity column followed by conventional chromatography steps.
<b>Note:</b>	For testing in cell culture applications, please filter before use. Note that you may experience some loss of protein during the filtration process.
<b>Storage:</b>	Store at -80°C.
<b>Stability:</b>	Stable for 12 months from the date of receipt of the product under proper storage and handling conditions. Avoid repeated freeze-thaw cycles.



[View online »](#)

RefSeq: [NP\\_056182](#)

Locus ID: 23786

UniProt ID: [Q9BXK5](#)

RefSeq Size: 5132

Cytogenetics: 22q11.21

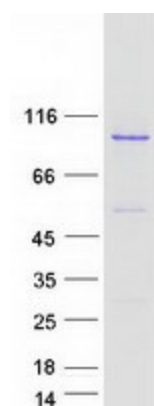
RefSeq ORF: 1455

Synonyms: BCL-RAMBO; Bcl2-L-13; MIL1

**Summary:** This gene encodes a mitochondrially-localized protein with conserved B-cell lymphoma 2 homology motifs. Overexpression of the encoded protein results in apoptosis. Alternatively spliced transcript variants have been observed for this gene. [provided by RefSeq, Jul 2012]

**Protein Families:** Druggable Genome, Transmembrane

### Product images:



Coomassie blue staining of purified BCL2L13 protein (Cat# [TP300042]). The protein was produced from HEK293T cells transfected with BCL2L13 cDNA clone (Cat# [RC200042]) using MegaTran 2.0 (Cat# [TT210002]).